



24 & 24A Bardolph Avenue Rosemeadow, NSW

5

2

2

## Dual income

A great opportunity positioned on approx 687 sqm of prime land, offering potential for future development and a perfect setting if you need to care for an elderly family member, provide space for your adult children, or generate dual income from the residence. As soon as you step inside the main house, you'll be impressed by the bright and airy layout.

The Granny Flat is approx two years old and both main home and Granny leased to Great, long term tenants who love their homes and maintain it exceptionally well..

Conveniently located close to shops, parks, schools, and bus stops, comfort and convenience are at your doorstep.

Key features include:

Main House: currently leased \$550 / week  
3 bedrooms | 1 bathroom | 1 Car spots  
storage

...

Price:

Contact Agent



**Tim Hills**

0401 815 295

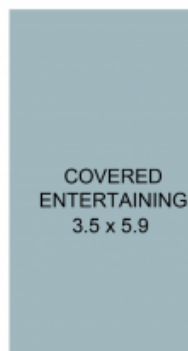
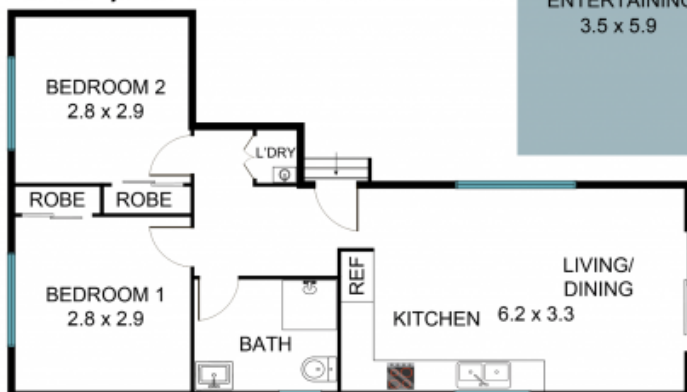


**Tim Hills**

0401 815 295



### Granny Flat



### Main Residence

**24 Bardolph Ave, Rosemeadow NSW 2560**



The floor plan is not to scale, measurements and in metres. Exterior elements are not in position.  
Plans should not be relied on. Interested parties should make and rely on their own enquiries.  
All other information provided has been collected from reliable sources but cannot be guaranteed for accuracy.