



1/192-200 Parramatta Road Stanmore, NSW

KICK START YOUR OWN BUSINESS!

- * 50 sqm space + 2 car spaces
- * Affordable Rental
- * Flexible Leasing Options

Stone commercial are proud to exclusively present this immaculate well-presented Ground Floor shopfront boasting an attractive leasing opportunity within an affordable rental allowing a variety of uses permissible (STCA)

Conveniently positioned to and from all destinations the space offers fantastic exposure with an abundance of foot and vehicular traffic.

- Prominent ground floor position
- Direct and easy access off Parramatta Road
- Airconditioned and alarmed
- Rear access to and from the parking garage
- Secure undercover parking for 2 (tandem) cars
- Well accessed by bus and closest to Stanmore train station



Paul Di Mauro

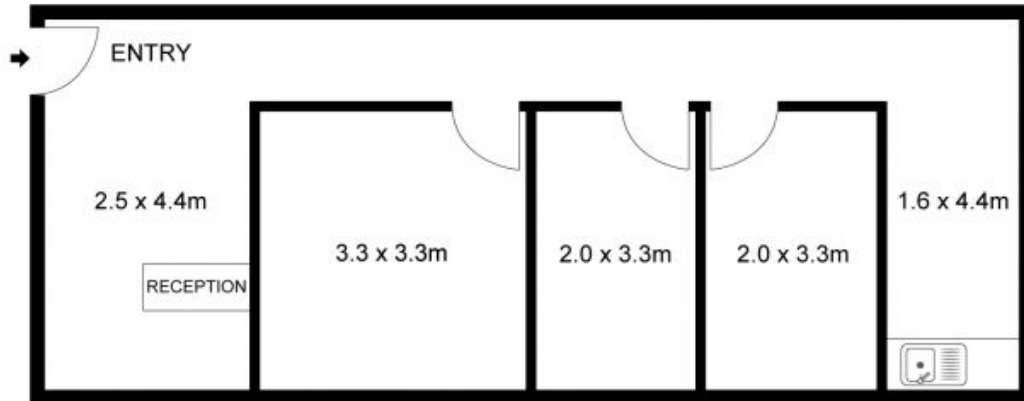
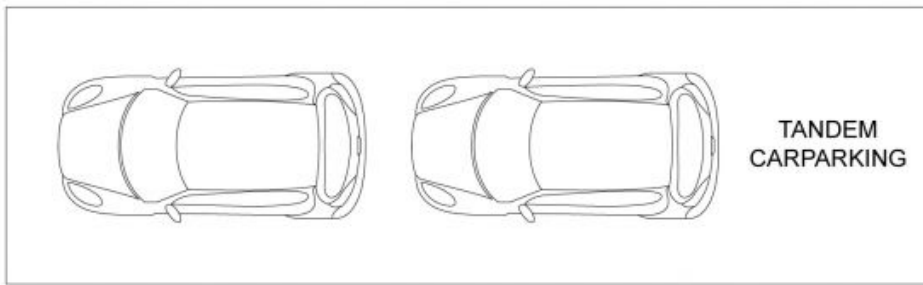
0431 099 976



John Bacic

0405 202 202

1/192-200 Parramatta Road
Stanmore



The floor not to scale. Measurements are indicative and in meters. Exterior elements are not in position. Plan should not be relied on. Interested parties should make and rely on their own requests. All other information provided has been collected from reliable sources but cannot be guaranteed for accuracy.