



56 Edgecliffe Esplanade Seaforth, NSW



### Stylish entertainer with level lawns in premium street

Set on 806sqm of near-level lawns with a sun-drenched north-to-rear aspect, this impressive dual level home is generously proportioned, impeccably appointed & intuitively designed for family living. Having undergone a substantial renovation the home encompasses a family-friendly layout with plenty of flexible space set amongst manicured gardens. More than just a home this appealing property offers an enviable family lifestyle in one of Seaforth's premier streets.

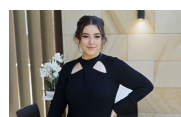
- Brand new carpet and freshly polished Tasmanian Oak timber floors throughout
- Brand new open plan kitchen featuring shaker style cabinets, stone benchtop, subway tiling and Miele appliances including gas cooktop
- Enormous family room at the rear leads to a large, undercover entertainers' patio with electronic pergola
- Formal lounge room with granite open fireplace and new plantation shutters
- Master suite with walk-in wardrobe, ensuite & opens to the balcony with harbour views
- Downstairs bathroom with shower as well as separate oversized laundry

**Price:** Leased  
**Available Date:** 01/07/2024



**Claire Kinnaird**

0432 038 151



**Alicia Sudol**

02 9949 2822



First Floor



Ground Floor



The floor plan is not to scale, measurements are indicative and in metres. Certain elements are not in position. Plans should not be relied on. Interested parties should make and rely on their own enquiries. All other information provided has been collected from reliable sources but cannot be guaranteed for accuracy.

56 Edgecliffe Esplanade  
Seaforth

STONE



The floor plan is not to scale; measurements are indicative and in metres. All features included in this 3D plan are for inspiration purposes only. This is not an exact replica of the property or the position of exterior elements. Plans should not be relied on. Interested parties should make and rely on their own enquiries.