

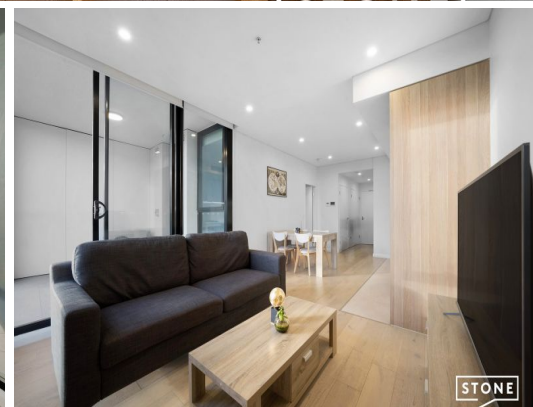
STONE



STONE



STONE



STONE

138/3 Maple Tree Road Westmead, NSW



Experience the Luxury Living

Experience luxury living in this centrally located building, close to Westmead Hospital, Western Sydney University, Public School, local bus stop, train station, and shopping village. Only a 3-minute drive to Parramatta.

- Open plan living and dining area with timber flooring
- Large bedroom with built-in robes
- Stylish modern bathroom with a bath
- SMEG appliances and 40mm stone benchtops
- Internal laundry with Omega dryer
- Plenty of extra cupboard storage
- Zone ducted air conditioning with separate control
- Security open car space plus storage cage

Price:

\$525,000



Chris Kypreos

0432 354 445

138/3 Maple Tree Road
Westmead

STONE



The floor plan is not to scale; measurements are indicative and in metres. Exterior elements are not in position. Plans should not be relied on. Interested parties should make and rely on their own enquiries. All other information provided has been collected from reliable sources but cannot be guaranteed for accuracy.

138/3 Maple Tree Road
Westmead

STONE



The floor plan is not to scale; measurements are indicative and in metres. All features included in this 3D plan are for inspiration purposes only. This is not an exact replica of the property or the position of exterior elements. Plans should not be relied on. Interested parties should make and rely on their own enquiries.