

STONE



27/153-165 Grosvenor Street Wahroonga, NSW

4 

2 

2 

### Pristine townhouse in idyllic Upper North Shore setting

- Contemporary kitchen, stone benchtops, Bosch appliances, breakfast bar
- Casual living room opens to covered entertaining terrace plus garden
- Formal living room flows to formal dining with doors to terrace
- Master bedroom with private balcony, walk-in robes, renovated en suite
- Three double bedrooms with built-ins, renovated family bathroom
- Study or optional 5th double bedroom with large under-stair storage
- Reverse cycle air conditioning, plantation shutters, new carpets
- Guest powder room, laundry, double lock-up garage with internal access

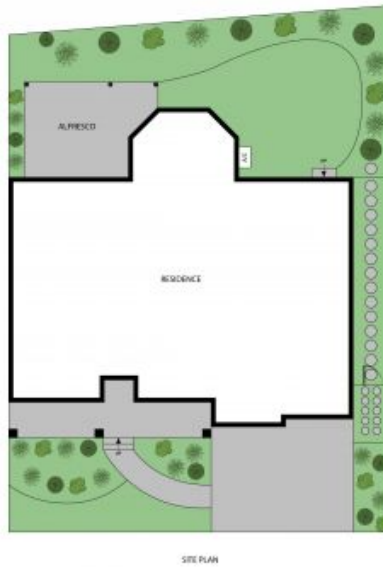
**Price:** Contact Agent

**Council Rates:** \$412.00 p/q

**Stone Real Estate -**

**Head Office**

27/153-165 Grosvenor Street  
Wahroonga



**Internal Living:** 264 sqm  
**External Living:** 43 sqm  
**Total Area:** 307 sqm  
**Land Area:** 284 sqm

The site plan and floor plan are not to scale; measurements are indicative and in metres. Bushes and trees are placed for illustration purposes. Plans should not be relied on. Interested parties should make and rely on their own enquiries. All other information provided has been collected from reliable sources but cannot be guaranteed for accuracy.

