



8 Northerly Terrace Port Macquarie, NSW



Contemporary two-level home in commanding hilltop position.

A light-filled corner block home built by award winning local builders Adenbrook. It's a compact well-designed home combining functionality with flair. The delightful kitchen at the heart of this family home features an island with a stone bench top and built-in sink. Enjoy meals in the outdoor alfresco or breakfast in bed listening to birdsong as the home is set up high overlooking pristine bushland. With an early learning, primary and secondary school close by this is a great place to call home and a base to explore and enjoy the mid-north coast lifestyle.

- Open plan kitchen, walk-in pantry & dining area leading to covered alfresco
- Easy care vinyl planked floors downstairs, carpeted throughout upstairs.
- Master bedroom, ensuite and walk-in robe, three additional bedrooms
- Luxury ensuite; main bathroom with bath, shower & separate toilet.
- Double garage, covered alfresco, easy-care garden.

Location: Ascot Park estate embraces a magnificent bushland setting, with its own playground and walking tracks. Seven minutes' drive from Port Macquarie CBD and even less to supermarket shopping, St Columba School, Charles Sturt University and the Port Macquarie Base ...

Price: \$780,000
Council Rates: \$2,650.00/year (approx)



David Geary

0413 681 125

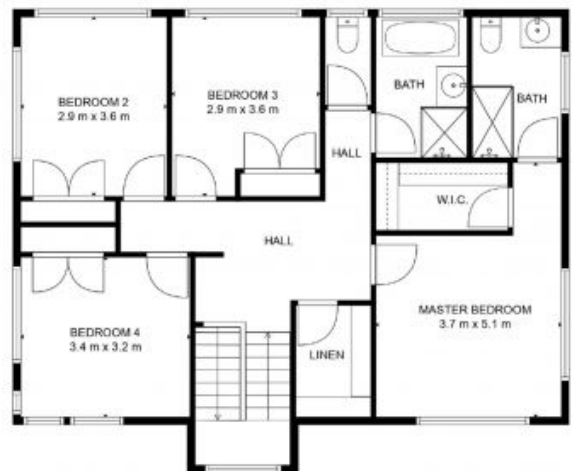


Nathan Owen

0422 144 720



Ground Level



First Level

Internal Living: 144 sqm
External Living: 45 sqm
Land Size: 288 sqm

The site plan and floor plan are not to scale; measurements are indicative and in metres. Bushes and trees are placed for illustration purposes. Plans should not be relied on. Interested parties should make and rely on their own enquiries. All other information provided has been collected from reliable sources but cannot be guaranteed for accuracy.

