



1212/1 Steam Mill Lane Haymarket, NSW



## PREMIUM LIFESTYLE 2-BEDROOM APARTMENT IN DARLING HARBOUR

Enjoy the premium lifestyle- Steam Mill Lane Darling Harbour Sydney is a good place for you!

This 2-bedroom apartment with Darling Harbour VIEW combines everything you need to enjoy a world-class lifestyle, including transport service, entertainment, education, and more.

### Features:

- Spacious timber floor living and dining area with balcony and expansive view
- Contemporary kitchen with stainless steel appliances, including gas cooking and dishwasher
- Generous bedrooms with built-in wardrobes and abundant natural light
- Internal laundry & ducted air conditioning
- Lift access and secure car parking & storage cage
- Enjoy the Darling Harbour view for fireworks on Saturday night

- Locate in the heart of CBD, with easy access to shops and entertainment: cafes, restaura...

**Price:** 2 Beds Darling Harbour View \$1,500 per

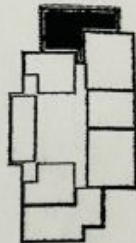
**Available Date:** 27/05/2024



**Falentina Young**

0416 808 801

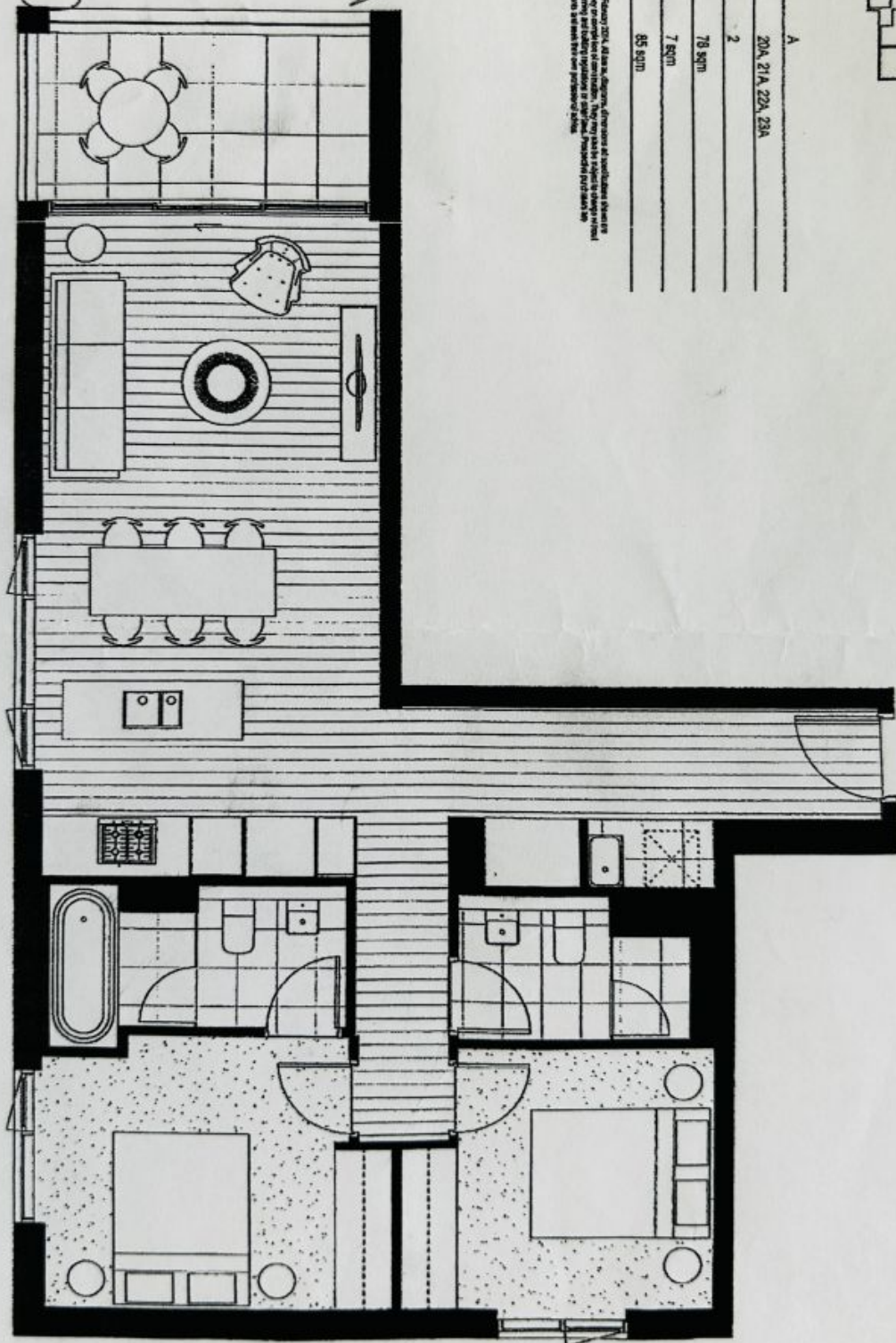




# LAYOUT PLAN

apartment type	A
apartment no.	204, 214, 224, 234
bedrooms	2
apartment area	78 sqm
balcony area	7 sqm
total apartment area	85 sqm

These are typical floor plans only. As of February 2014, all plans are subject to change without notice. They may also be subject to change without notice if the building is subject to a change in design. The actual floor plan may vary from the typical floor plan shown. The actual floor plan may vary from the typical floor plan shown. The actual floor plan may vary from the typical floor plan shown.



APARTMENT NO. 204, 214, 224, 234

*Handwritten signature and notes:*  
 1. inaway tadapat  
 2. inaway tadapat

