

905/4 Footbridge Boulevard WENTWORTH POINT, NSW



Top Floor North East Aspect One + Study Apartment

This is an opportunity to become a part of an exclusive and brand-new waterside community. Featuring a spacious one-bedroom layout, this top-floor apartment in the well-designed Quarterdeck building offers low-maintenance living, excellent security, and a highly convenient location.

Quarterdeck was built by Billbergia, the award-winning developer. It is located in the lively Waterfront Estate and offers the epitome of urban living with its sophisticated design.

Luxury Features :

- North-East aspect
- Spacious open plan living/dining area flowing to a good-sized winter -garden/ outdoor balcony
- Bedroom with built-in robes with Balcony access
- Study
- Air Conditioning

Price:

Under Offer



Ivan Gunawan

0421 032 760



Karlina Widjaja

0499 882 288

Total 64 m2

1 Parking

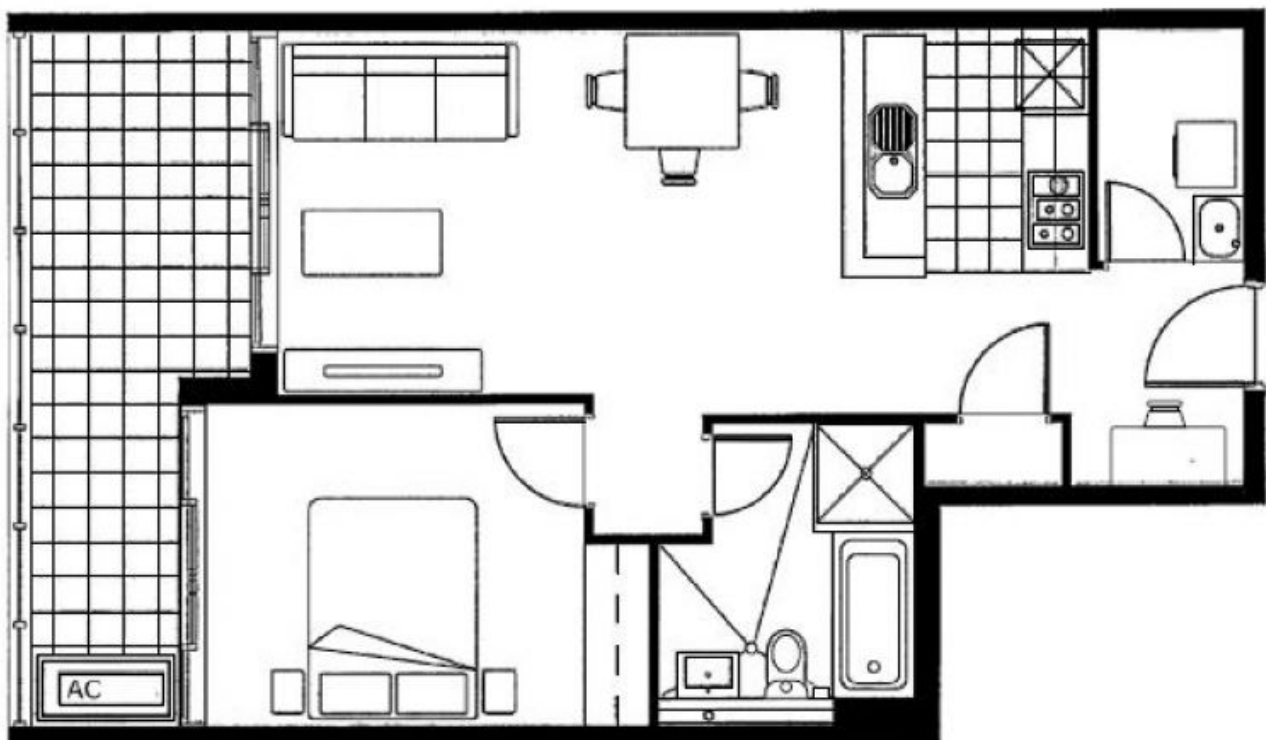
1 Storage

Estimate Rent \$700 pw

Strata \$966 pq

Council \$316 pq

Water \$171 pq



Disclaimer:

This floor plan including furniture, fixture measurements and dimensions are approximate and for illustrative purposes only.

