

STONE



2512/43-45 Wilson Street BOTANY, NSW



## An oversized 1 Bedroom + Study with uninterrupted morning sun

This Spacious 1+ Study apartment is designed with quality inclusions & modern finishes. The separate study room is so spacious that it could be potentially used as a second bedroom. It's located next to the Kids & Dogs friendly Tannery Park. Filled with ample natural unblock Morning-Light, this generous security apartment offers a convenient and affordable entry into the Eastern Suburbs market.

Excellent accommodates a contemporary lifestyle of ultra-convenience located in the heart of Botany. Footsteps from Botany Road with plenty of restaurants & cafes to choose from, as well as Sir Joseph Banks Park & the Botany Foreshore, and within a short drive to some of the best beaches the Eastern suburbs offer. Your private oasis awaits you.

Premium Features :

- \* Separated Study Room for Work-From-Home Lifestyle or 2nd Bedroom
- \* Unblock East-facing morning sun apartment
- \* Ducted air-conditioning...

...  
...

Price:

ONLY \$599,000 OR HIGHER! MORTGAGE IN POSSESSION



**Ivan Gunawan**

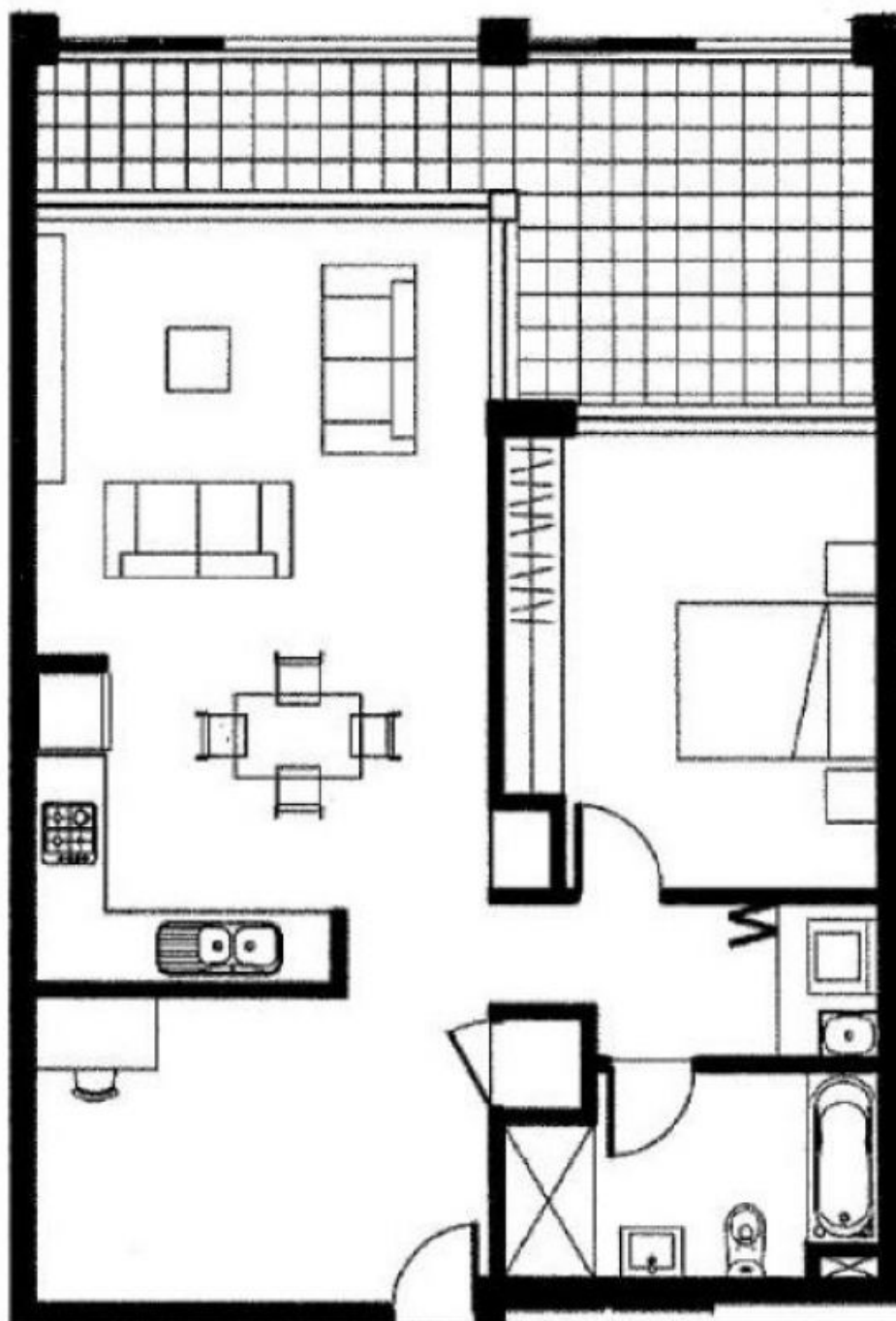
0421 032 760



**Karlina Widjaja**

0499 882 288

Total 105 m<sup>2</sup>  
1 Parking



Disclaimer:

This floor plan including furniture, fixture measurements and dimensions are approximate and for illustrative purposes only.

