



STONE



313/68 Pacific Drive Port Macquarie, NSW

2 1 1

Resort style unit, oceanside with ocean views

Set within the premier wing of Flynn's Beach Resort, this spacious, light-filled apartment directly faces the Pacific Ocean, offering intimate ocean glimpses through the adjacent coastal rainforest. Nestled amid tropical gardens, it serves as an outstanding home or investment with access to all the top-tier resort facilities include two heated swimming pools, tennis courts, barbecues, and a gymnasium, making it a perfect retreat.

This property can be occupied personally or used as a unique investment opportunity. Options include obtaining a long-term tenant or placing it in the holiday rental pool, offering an idyllic lifestyle with multiple possibilities. Located just four minutes from the CBD, it combines convenience with a tranquil coastal living experience....

Price: \$560,000
Council Rates: \$1,900.00/year (approx)
Strata Rates: \$2,300.00 p/q



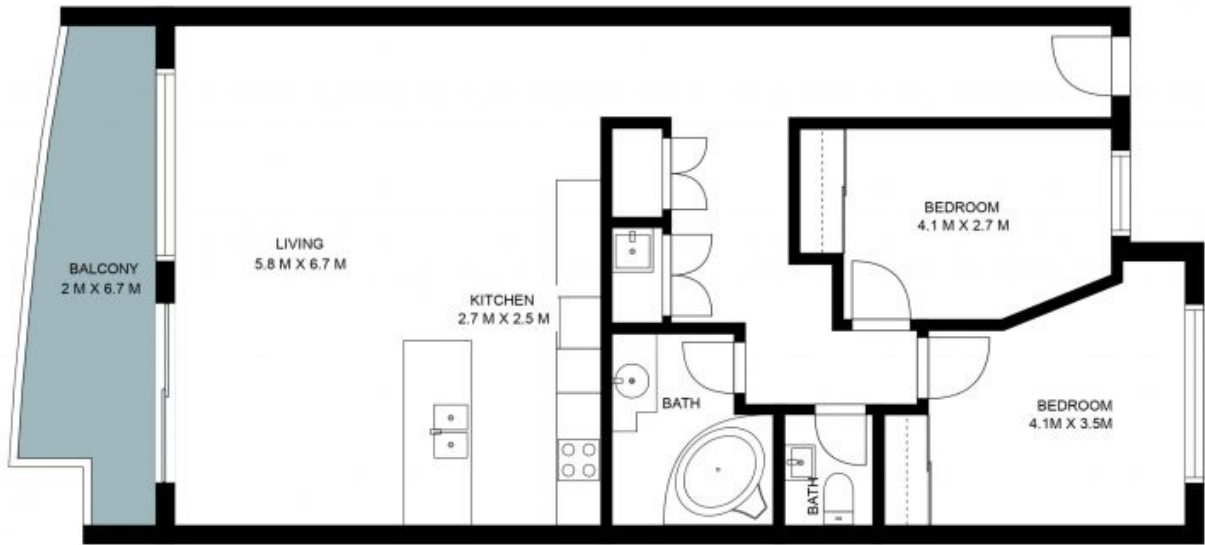
Nathan Owen

0422 144 720



David Geary

0413 681 125



Internal Living: 90 sqm
External Living: 10 sqm
Total Living Area: 100 sqm

The site plan and floor plan are not to scale; measurements are indicative and in metres. Bushes and trees are placed for illustration purposes. Plans should not be relied on. Interested parties should make and rely on their own enquiries. All other information provided has been collected from reliable sources but cannot be guaranteed for accuracy.