



12 Mona Court Oxenford, QLD



Inner Suburban Dual Living

In an elevated position relishing westerly sun setting views and nestled in a serene, tree-lined cul-de-sac in the heart of Oxenford, welcome to 12 Mona Court. This charming property offers the rare, yet highly desirable dual living design with two separate dwellings (individually metered) on the one title that caters to extended families, savvy investors, or those seeking a to run a business from home with the added convenience of an on-site office.

Conveniently located close to Westfield Helensvale, light and heavy rail, the M1 to the Gold Coast and Brisbane CBD, you are also within walking distance to local specialty shops, Gaven Heights State School, local swim centre, parks, and public transport.

Main Residence:

...

Enjoy our Queensland lifestyle with a ripping covered alfresco outdoor dining area with built in BBQ for leisurely Saturday and/or Sunday afternoon gatherings in front of the outdoor mounted TV (you will need to install) with a few beers...!! Landscaped, fully fenced backyard (with side access) with garden shed, water tanks for irrigation, fruit trees and ple...

Price: \$1,080,000



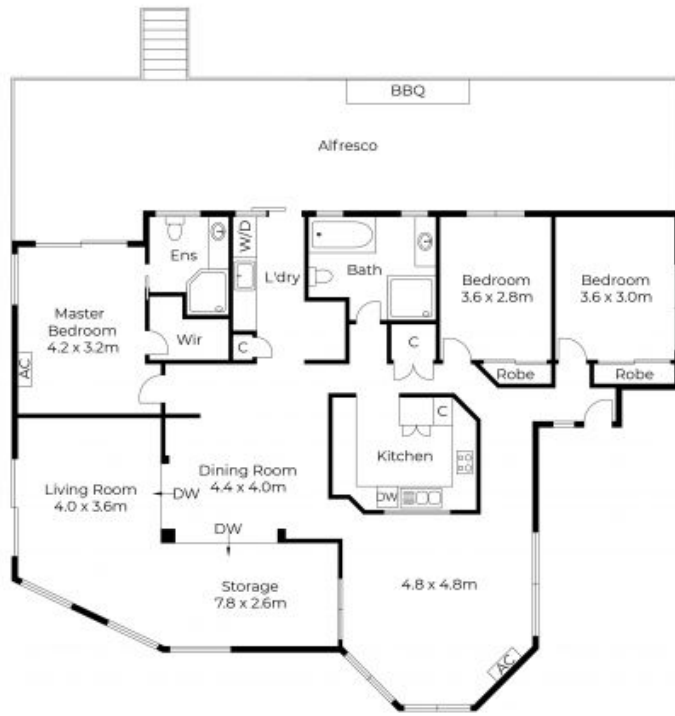
Shane Evans

0416 193 663

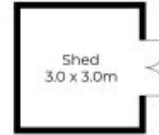


Marcello Giardina

0468 611 953



Main House



Studio



Floor plans and site plans are for illustrative purposes only. They are not part of any legal document or title and are subject to errors, omission, and inaccuracies. Whilst every attempt has been made to ensure the accuracy of this plan, measurements of doors, windows, rooms, cupboards etc are approximate only.

APPROXIMATE AREA
 LIVING AREA : 156 m²
 TOTAL AREA : 205 m²



Floor plans and site plans are for illustrative purposes only. They are not part of any legal document or title and are subject to errors, omission, and inaccuracies. Whilst every attempt has been made to ensure the accuracy of this plan, measurements of doors, windows, rooms, cupboards etc are approximate only.

APPROXIMATE AREA
LIVING AREA : 154 m²
TOTAL AREA : 205 m²