



10/29c Great Western Highway Parramatta, NSW

2 1 1

### Renovators Dream

This two bedroom apartment in original condition is located on level 2 of a full- brick security block. Perfectly positioned at the rear of the complex offering plenty of natural light. This exceptional opportunity has plenty of potential to renovate and add value to this property.

Centrally located within a short stroll to Parramatta CBD, railway station, bus interchange hub, Light Rail & Sydney Metro (under construction), Westfield Shoppingtown, reputable schools, T-Way bus, sports grounds, Parramatta Park, CommBank Stadium, Parramatta Aquatic Centre, trendy restaurants, cafes, and newly refurbished Parramatta square.

- Secure building with intercom
- Quiet location at rear of the complex
- Central location
- Double brick construction
- Combined living/dining with adjoining kitchen

Disclaimer: This advertisement is a guide only. Whilst all information has been gathered f...

Price: \$410,000

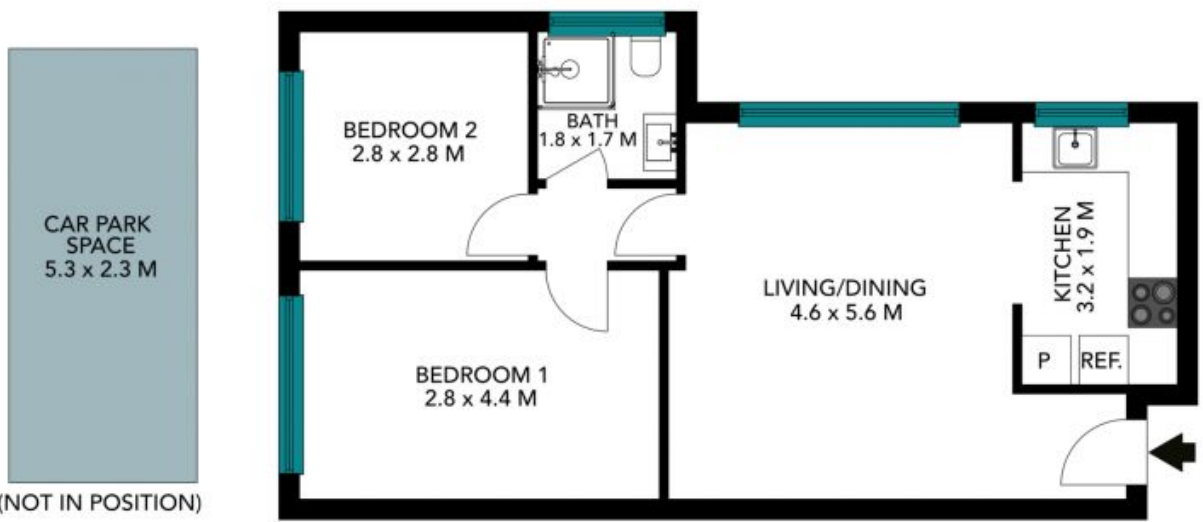


**Aaron Lih**  
0420 825 598



**Nicola Reilly**  
0405 203 525

10/29C Great Western Highway  
Parramatta



The floor plan is not to scale, measurements are indicative and in metres. Exterior elements are not in position. Plans should not be relied on, interested parties should make and rely on their own enquiries. All other information provided has been collected from reliable sources but cannot be guaranteed for accuracy.

10/29C Great Western Highway  
Parramatta



The floor plan is not to scale; measurements are indicative and in metres. All features included in this 3D plan are for inspiration purposes only. This is not an exact replica of the property or the position of exterior elements. Plans should not be relied on. Interested parties should make and rely on their own enquiries.