



1/23 Regent Honeyeater Grove North Kellyville, NSW



No step, the ideal downsizer

A luxurious oversized ground floor apartment, offers contemporary living at its finest. Spacious light filled open plan living, versatile separate study and storage galore. 'The Grove' and its friendly community offers manicured, established gardens, resort swimming pool and convenience all located within a residential locale. Come and see for yourself why this complex is sought after and sets itself apart from all others.

- Spacious light filled living with stylish laminated flooring & freshly painted
- 2 generous sized bedrooms, master with WIR & ensuite, 2nd with courtyard access
- Separate study with double built in cupboards ideal for working from home
- Kitchen with stone bench tops, stainless steel quality appliances, gas cook top
- Private covered entertaining courtyard with garden & grass for the fur baby
- Stylish fully tiled bathrooms & internal European laundry complete with dryer
- R/C ducted air conditioning, downlights, video intercom, blinds & screens
- Double car space & large lock up storage cage close to lift in security complex

Price: \$885,000
Council Rates: \$256.00 p/q
Water Rates: \$207.44 p/q
Strata Rates: \$1,303.15 p/q



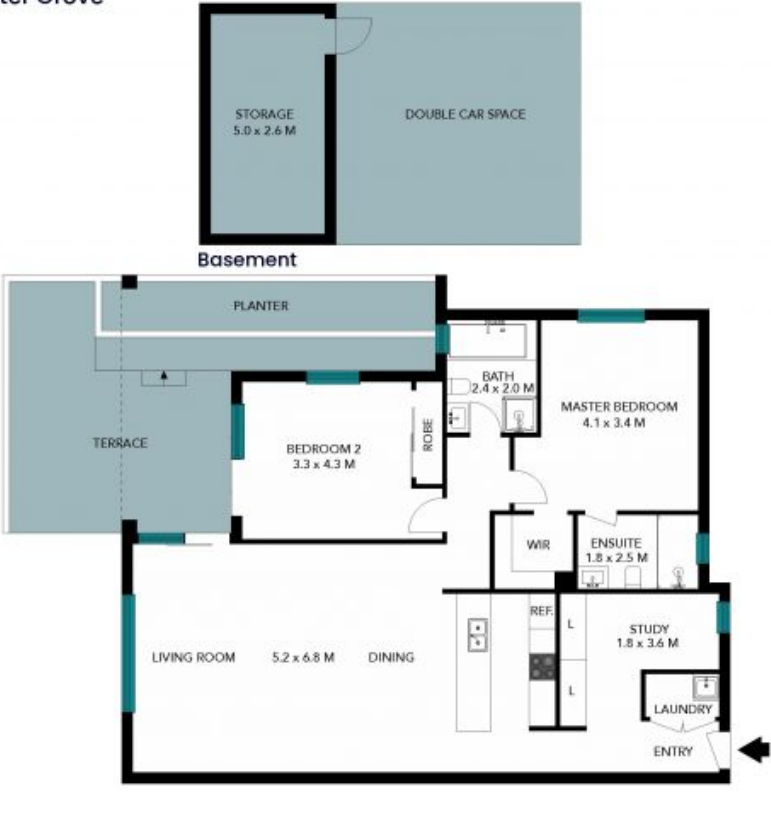
Viviane Mylott

0438 983 615



Jane Booty

0412 207 452



The floor plan is not to scale; measurements are indicative and in metres. Exterior elements are not in position. Plans should not be relied on. Interested parties should make and rely on their own enquiries. All other information provided has been collected from reliable sources but cannot be guaranteed for accuracy.