



307/1 Guess Avenue Wollri Creek, NSW 1 1 1

Convenient and Contemporary one-bedder - Total Size 105 sqm

Start your property journey in marvellous style in this bright and airy indoor-outdoor one-bedroom apartment.

Ideal for city commuters seeking convenience and local lifestyle amenity, the contemporary pad provides spacious open-plan living, with large balconies on either side. Enjoy cross-flow ventilation and northerly sunshine, plus abundant space to entertain, in the cleverly designed, free-flowing space.

Park securely and reach the CBD in a few minutes, with express trains, shops and dining mere footsteps away. A cycling track on the doorstep connects to the city, inner-west, Cooks River and Botany Bay beaches, making this a location where urban convenience and natural beauty harmoniously unite.

Property Features:

...

Price: FOR SALE | \$569,000



Sam Abbas
0406 750 075



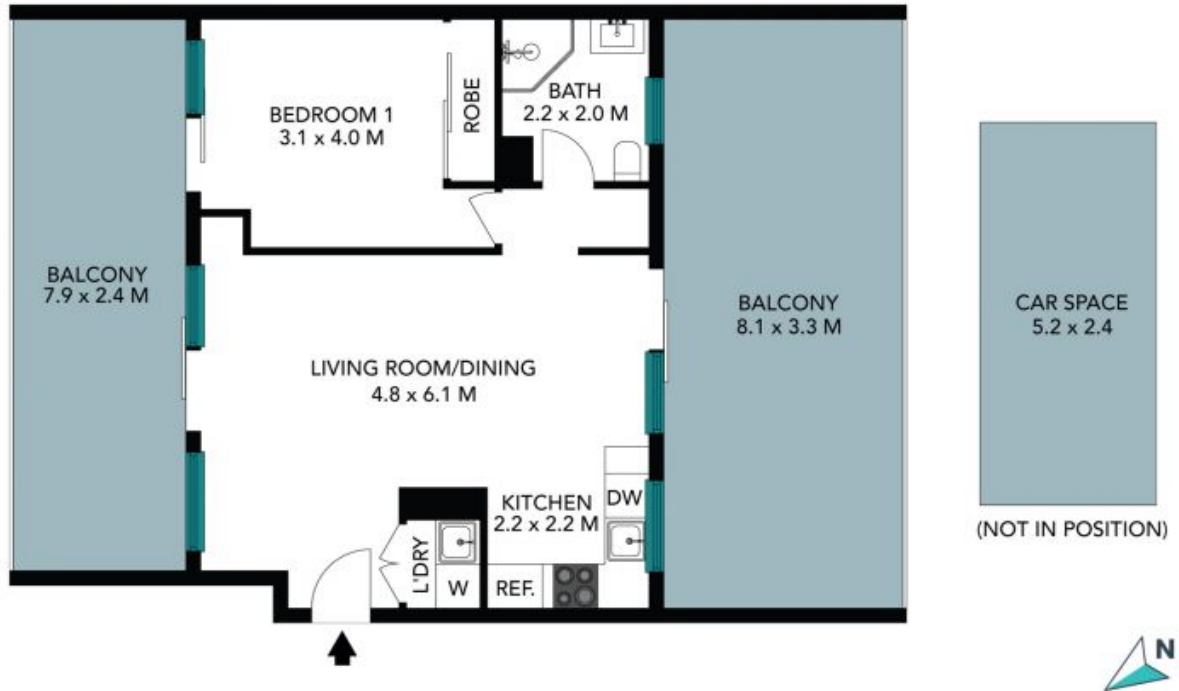
Sam Abbas
0406 750 075

307/1 Guess Avenue
Wolli Creek



The floor plan is not to scale, measurements are indicative and in metres. All features included in this 3D plan are for inspiration purposes only. This is not an exact replica of the property or the position of exterior elements. Plans should not be relied on. Interested parties should make and rely on their own enquiries.

307/1 Guess Avenue
Wolli Creek



The floor plan is not to scale, measurements are indicative and in metres. Labels elements are not in position. Plans should not be relied on. Interested parties should make and rely on their own enquiries. All other information provided has been collected from reliable sources but cannot be guaranteed for accuracy.