

4/23 Waiwera Street Lavender Bay, NSW



Holding Fee Taken - Leo Zanetic 0415 319 758

This oversized 57sqm furnished studio apartment in the 1920s character filled 'Bellarion Court' enjoys stunning views of the Harbour Bridge & Opera House, and offers direct access to the waterfront parklands of Lavender Bay. Moments to McMahons Point village, cafes, shops, ferry, bus, train and North Sydney CBD.

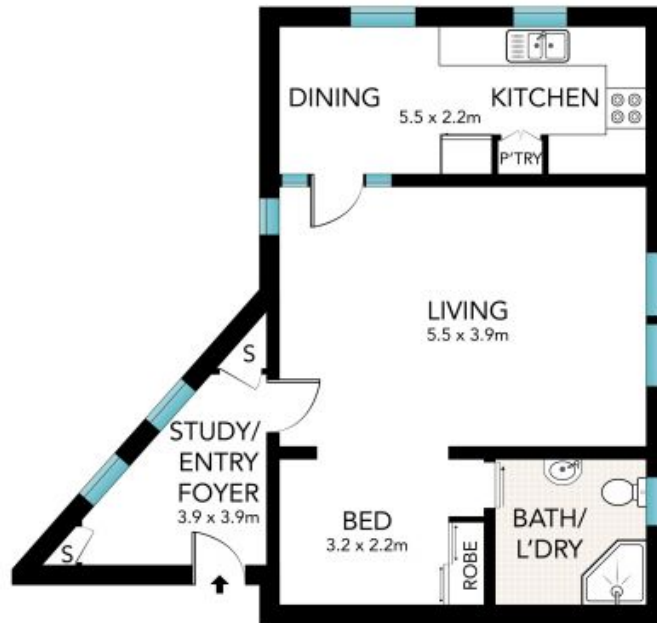
- High patterned ceilings, picture rails and sash windows
- Unique entry foyer/home office separate to apartment
- Ornate timber detailing providing separation of the bedroom area
- Bathroom with washer/dryer
- Walk to Milsons Point trains, Greenwood Shopping Plaza & Kirribilli village
- Permit for street parking available from North Sydney Council
- Footsteps to Wendy's Secret Garden and the harbour foreshore
- Private access via Lavender Crescent with accessible parking metres away

Available now! - Contact Leo Zanetic 0415 319 758 to arrange a private inspection.

Price: \$680 pw
Bond: \$2,720
Available Date: 21/06/2024

Stone Real Estate -

Head Office



LEVEL ONE



All the information provided has been collected from reliable sources but cannot be guaranteed for accuracy. Interested persons should rely on their own enquiries. All dimensions are approximate and indicative only.

4/23 Waiwera Street, Lavender Bay