



Ormeau, QLD

5

2

2

SPACIOUSNESS PERSONIFIED

In search of a wonderfully spacious family home with 5 bedrooms plus office and an awe-inspiring charm??

On a 702sqm flat allotment nestled within the peaceful ambiance of Jacobs Ridge Estate, a sanctuary boasting leisurely parks, meandering walking trails, and lively playgrounds, resides this expansive residence which is an absolute gem..!!

Strategically positioned between the vibrant centres of the Gold Coast and Brisbane, Jacobs Ridge epitomizes a family-oriented lifestyle with its verdant landscapes, communal tennis court, and convenient access to the Pacific Motorway.

Price: \$1,050,000



Shane Evans

0416 193 663



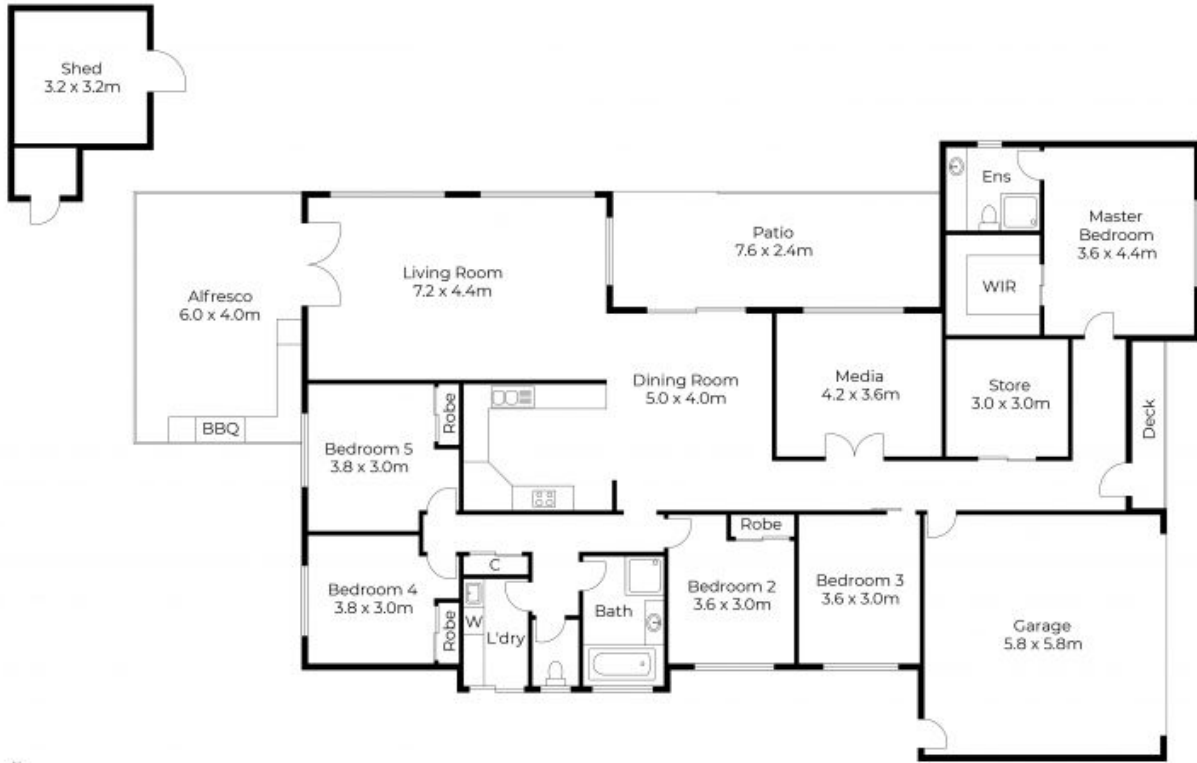
Marcello Giardina

0468 611 953



Floor plans and site plans are for illustrative purposes only. They are not part of any legal document or title and are subject to errors, omission, and inaccuracies. Whilst every attempt has been made to ensure the accuracy of this plan, measurements of doors, windows, rooms, cupboards etc are approximate only.

APPROXIMATE AREA
LIVING AREA : 195 m²
TOTAL AREA : 255 m²



Floor plans and site plans are for illustrative purposes only. They are not part of any legal document or title and are subject to errors, omission, and inaccuracies. Whilst every attempt has been made to ensure the accuracy of this plan, measurements of doors, windows, rooms, cupboards etc are approximate only.

APPROXIMATE AREA
 LIVING AREA : 199m²
 TOTAL AREA : 288 m²