



1/2a Killara Avenue Killara, NSW 2 2 1

Full brick garden apartment enjoys north sun and walk to rail

Walk straight in to a lifestyle of luxury, ease, and convenience, where this spacious single level apartment showcases 141sqm approx. on title with a coveted north orientation. The accessible full brick design, with level entry, is brilliant for both young and mature households. The large open living and dining area flows to a private courtyard garden giving a house-like feel. Truly impressive, the full size gourmet gas kitchen has a suite of Miele appliances set with ample storage and a dining bar. The master bedroom includes an ensuite. 800m stroll to rail.

- Incredible level of quality creating a lovely environment to call home
- Full brick and concrete slab security building in beautiful communal gardens
- Level entry to apartment enjoying a house-like layout with private courtyard
- Spacious throughout with a total of 141sqm on title and direct street access
- Open lounge and dining with a bank of glass sliders capturing north sunshine
- Indoor-outdoor flow to the entertainer's terrace, deck, and level lawn
- Gourmet family-size kitchen, stone benchtops, ample storage, breakfast bar

Price: \$1,200,000

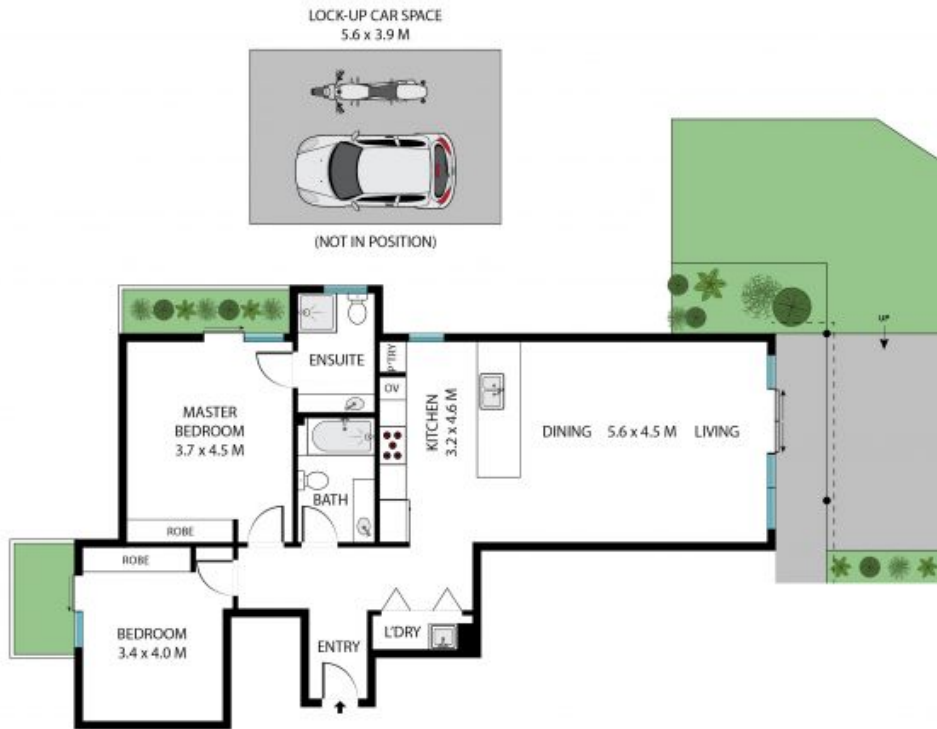


Matt Payne
0435 825 242



Christopher Smith
0432 369 197

1/2A Killara Avenue
Killara



Internal Living: 96 sqm

The site plan and floor plan are not to scale; measurements are indicative and in metres. Bushes and trees are placed for illustration purposes. Plans should not be relied on. Interested parties should make and reply on their own enquiries. All other information provided has been collected from reliable sources but cannot be guaranteed for accuracy.