

Actual View



1601/93 Pacific Highway North Sydney, NSW

3

3

2

Legendary Harbour Bridge views from whole floor penthouse

Make this spectacular penthouse your own and enjoy legendary Harbour Bridge views every day and experience the absolute magic of New Years Eve fireworks from this unique vantage point.

- Soaring urban sophistication across a huge single level open plan space
- Bathed in a harbour panorama with the Bridge, Luna Park and City skyline
- Sunlit living + dining, hardwood timber floors, contemporary loft vibe
- Entertainer's kitchen, gas cooktop, wide oven, dishwasher, island bar
- Exquisite use of chocolate toned stone to kitchen and bathrooms
- Three spacious bedrooms all configured with lavish ensuite bathrooms
- Home office, internal laundry room, built-in robes and storage
- Two secure on-site basement parking spaces, lift to door, reverse air con

Price:

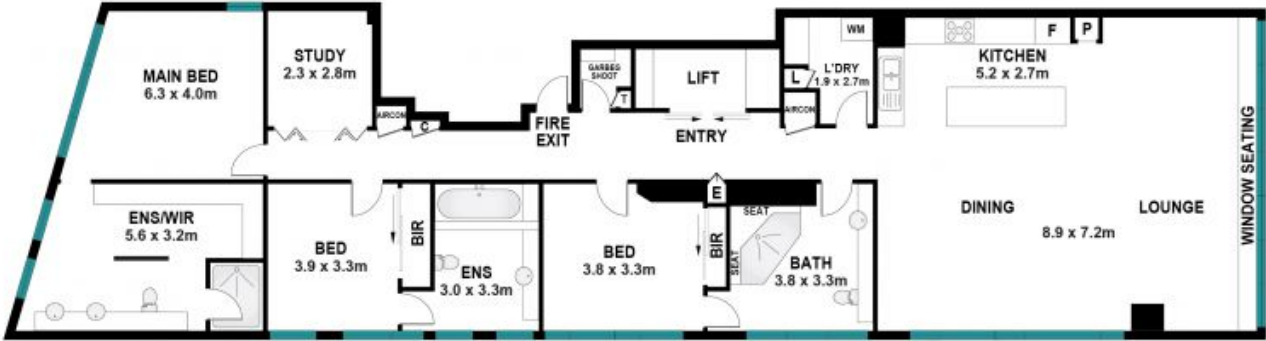
For Sale \$2,750,000



Ryan Woo

0410 884 680

1601/93 Pacific Highway,
North Sydney



The site plan and floor plan are not to scale; measurements are indicative and in metres. Bushes and trees are placed for illustration purposes. Plans should not be relied on. Interested parties should make and rely on their own enquiries. All other information provided has been collected from reliable sources but cannot be guaranteed for accuracy.