



63B Cobran Road Cheltenham, NSW

5

2

Prime Location in School Catchment for Cheltenham Girls, Epping Boys, and Beecroft Primary

Immersed away from the street, this immaculately maintained home is bathed in northerly sun, offering tranquility and comfort. Nestled at the end of a cul-de-sac bordering Lane Cove National Park, this residence boasts a serene location while remaining conveniently close to amenities such as Beecroft station, just a 15-minute walk away (1.1 km) via Sutherland Rd and Cobran Rd.

Key Features:

- Built in 1997, this home embodies modernity on a solid foundation.
- Welcoming and sunlit casual living/dining area seamlessly connects with the outdoors.
- Sunken formal lounge room features a soaring raked ceiling, adding elegance to the space.
- Two outdoor decks capture northern sun and offer delightful garden views.
- Study with built-in wardrobes presents a possible fifth bedroom option....



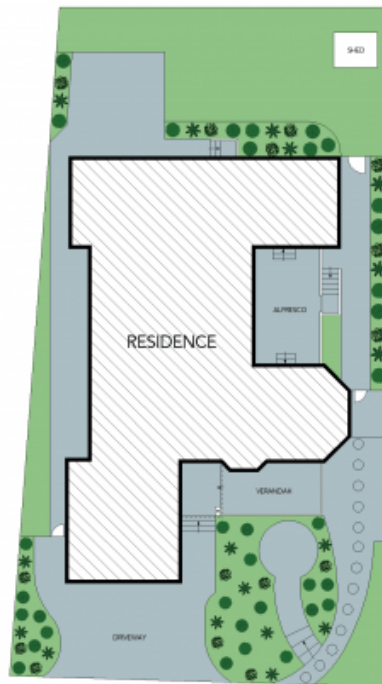
Faz Assir

02 8866 1509

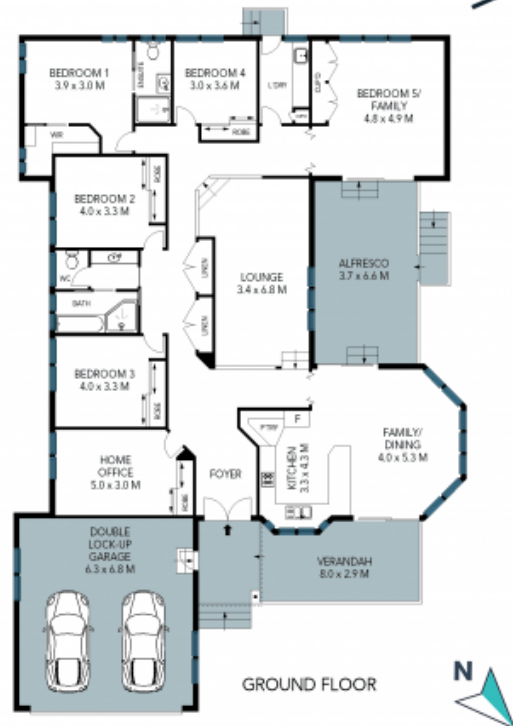
Price: \$1,250 Per Week
Available Date: 03/03/2024

63B Cobran Road,
Cheltenham

STONE



SITE PLAN



The site plan and floor plan are not to scale; measurements are indicative and in metres. Bushes and trees are placed for illustration purposes. Plans should not be relied on. Interested parties should make and rely on their own enquiries. All other information provided has been collected from reliable sources but cannot be guaranteed for accuracy.