



302/118 Princes Highway Arncliffe, NSW

2 2 1

Sunny near-new haven in central hub

Discover unbelievable amenity within 10km of the CBD in this chic near-new apartment. Part of the stylish Endeavour Apartments, completed in 2018, the third-floor home basks in a bright north-westerly aspect, with pleasant district views to Botany Bay.

The home's elevated position captures fresh bay breezes, with an open-plan layout and ceiling-height sliding doors to the balcony ensuring a wonderful sense of free-flowing space.

Walk just 400 metres to trains, shops and dining in Arncliffe's village centre, or 800 metres to waterfront parklands and cycling trails at Wollie Creek. With the airport just a few minutes away, and inner-west hotspots a short drive up the road, this could be your ticket to a dynamic lifestyle.

- Six years-young, third-floor apartment
- Bright-north-westerly aspect, plus south-easterly views to Botany Bay

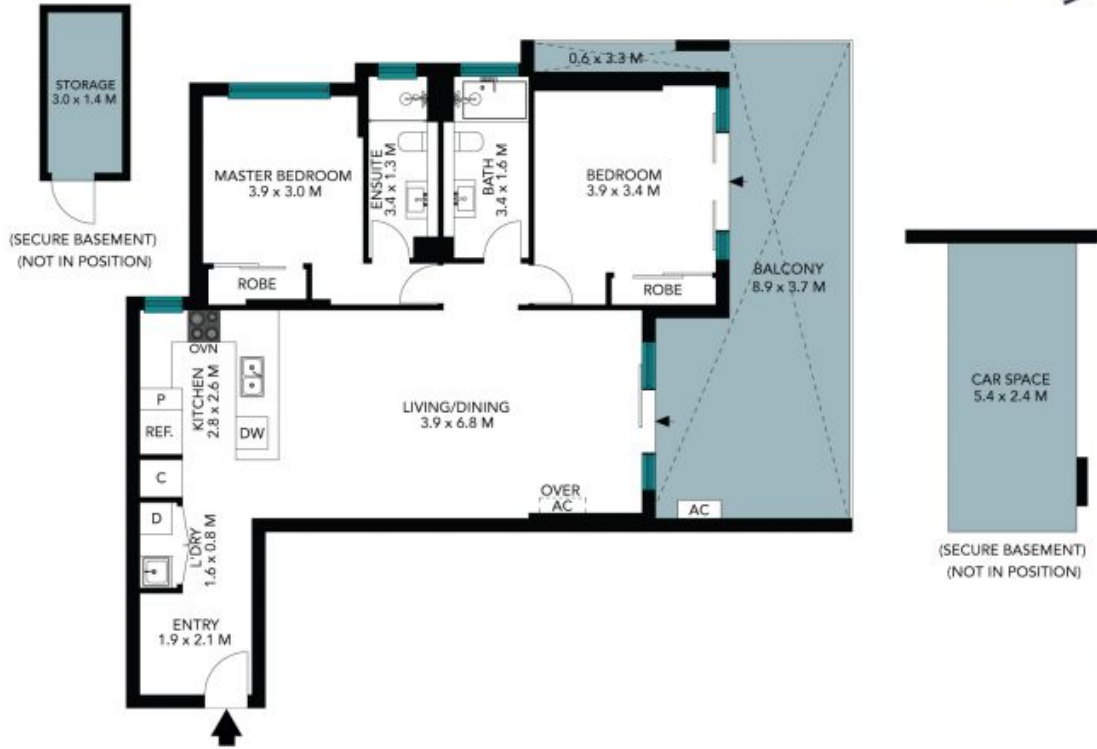
Inspect:

Price: \$850 per week
Bond: \$3,400
Available Date: 23/09/2024

Dan Nguyen

0421 237 342

302/118 Princes Highway
Arncliffe



The floor plan is not to scale, measurements are indicative and in metres. Exterior elements are not in position. Plans should not be relied on. Interested parties should make and rely on their own enquiries. All other information provided has been collected from reliable sources but cannot be guaranteed for accuracy.