



303/1 Victoria Street Roseville, NSW 1 1 1

Cutting-edge walk to everything lifestyle

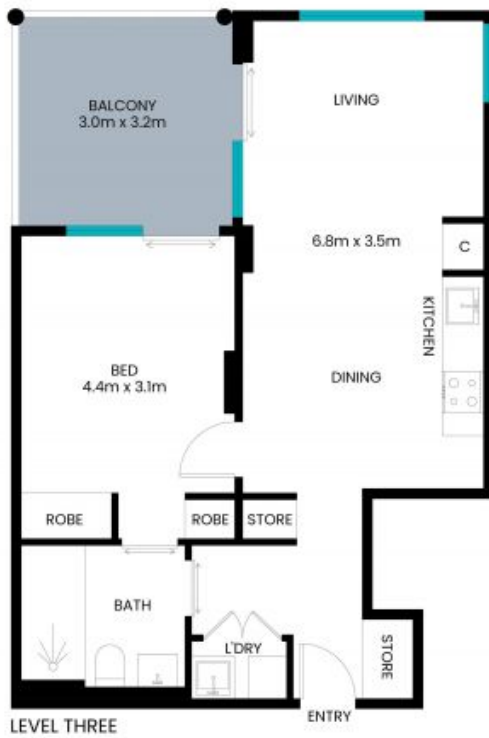
Holding a coveted end of building position capturing north light and elevated leafy views, this spacious apartment is a model of clever design in the walk-to-everything heart of east side Roseville boasting 400m to rail and a refreshing stroll to Chatswood Chase. Set in the lauded "One Victoria Park" security complex, the open layout is appointed with finishes of exemplary quality, including Miele in the gas kitchen, and skillfully segues living and a king-size bedroom to the large balcony overlooking the garden park.

- Delightful first home, downsize, or astute investment to lease out
- Stellar convenience, 400m to rail & village, 1.2km to Chatswood Chase
- East side position in delightful street, end of building with leafy outlook
- Soaring ceiling with clerestory window captures sunlight from north elevation
- Open living & dining, designer interiors, full height doors open to balcony
- Kitchen with integrated dishwasher, Miele gas cooktop, oven, ducted rangehood
- King-size bedroom, flow to balcony, mirror robes, clever two-way ensuite

Price: Contact Agent



Andrew Braid
0404 979 597



The site plan and floor plan are not to scale; measurements are indicative and in meters. Bushes and trees are placed for illustration purposes. Plans should not be relied on. Interested parties should make and rely on their own enquire. All other information provided has been collected from reliable sources but cannot be guaranteed for accuracy.