



## 25-27 Kearsley Street Bellbird, NSW

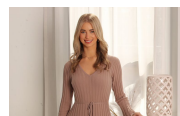
### Half acre block to build the home of your dreams

The ultimate blank canvas, this cleared half acre block (2,023sqm) in peaceful Bellbird, just 5km from the thriving Cessnock CBD, presents an exciting opportunity to design the home of your dreams. Boasting a 40.235m frontage, the block's north facing aspect guarantees plenty of natural light, while the deep backyard ensures there is abundant room for a deck, pool and a large garage or shed.

- All building work is subject to approval from Cessnock Council
- 2023sqm north facing plot with approx. dimensions of 40.235m x 50.29m
- Kearsley Street is a quiet cul-de-sac just 500m from The Honey Tree Preschool
- 600m to Bellbird Public School, 6.4km to Mount View High School
- 1800m to the famous Bellbird Hotel for a drink or bistro meal
- Within a 1km radius find fresh produce markets, service station, and medical centre
- 5km to Cessnock for shopping, eateries and services
- 10 minute drive to Hunter Valley vineyards and cellar doors

**Price:**

Under Contract



**Courtney Matheson**

0400 768 103



**David Tanchevski**

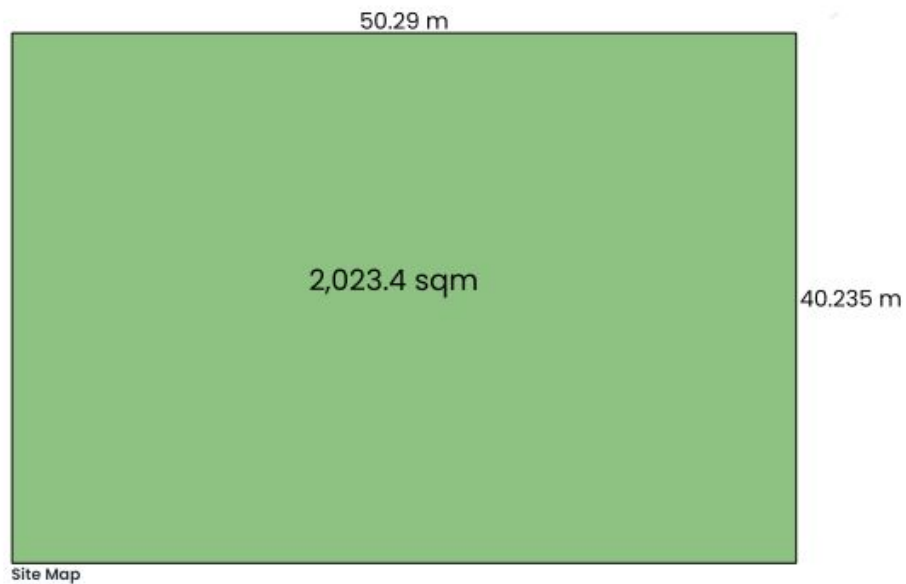
02 4089 1111



25-27 Kearsley Street  
Bellbird



Kearsley Street



The site plan and floor plan are not to scale; measurements are indicative and in metres. Bushes and trees are placed for illustration purposes. Plans should not be relied on. Interested parties should make and rely on their own enquiries. All other information provided has been collected from reliable sources but cannot be guaranteed for accuracy.