



3/133 Greenwich Road Greenwich, NSW



### Olde World Charm + Space & Convenience

Centrally located, this beautifully appointed period-style apartment is situated a short distance from the lively hub of Greenwich Village suitable for a Professional Couple &/or Young Family

Easy access to Wollstonecraft train station or Mitchell St Wharf

District Outlook with Water Glimpses from the Living Room & Kitchen

2 Spacious Bedrooms both with Built-in Wardrobes

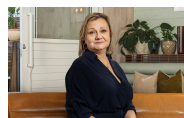
3rd Single bedroom or Great Home Office

Existing Bathroom with Shower Over Bath

Beautiful Kitchen with Gas Cooktop & Dishwasher

Price: LEASED - \$720 per week

Available Date: 18/08/2023



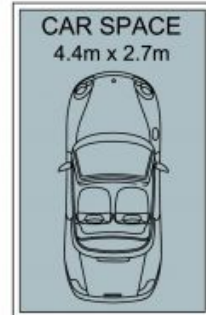
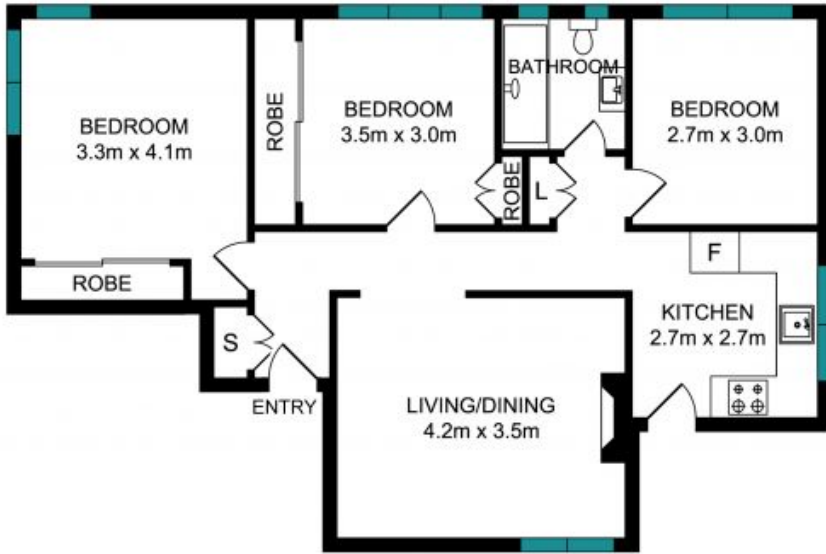
**Diane Shipley**

0413 137 874



**Jaydn Frintzilas**

0468 998 294



The Floor plan is not to scale, measurements are indicative and in meters. Colored elements are not in position. Plan should not be relied on. Interested parties should make and rely on their own enquiries. All other information provided has been collected from reliable sources but cannot be guaranteed for accuracy.

1/133 Greenwich Road, Greenwich

