

15/9 Orchid Crescent Fitzgibbon, QLD

3

1

1

Spacious lowset

Just a hop, skip and a jump to shops, parks, public transport and schools, this lowset brick villa nails the brief for first home buyers, downsizers and savvy investors. With a fully fenced low maintenance yard and spacious open plan living, you won't be surprised as to why the 25 villa complex is so tightly held.

- Air-conditioning & security screens throughout
- NBN connected - fibre to the premises
- Fully fenced courtyard with side access & garden shed
- Bathroom with bath & separate toilet
- Secure garage with internal access
- Public transport, parks, schools & shops close by

- 3 Bedrooms:

- Bathroom:

>The bathroom features single basin vanity with storage, framed vanity mirror, shower with detachable shower head, separate bath, tiled flooring, extractor fan, frosted sliding windows with security screen and fly screen. Linen cupboard conveniently located in the hallw...

Price:

Offers over \$499,000



Kate Veal

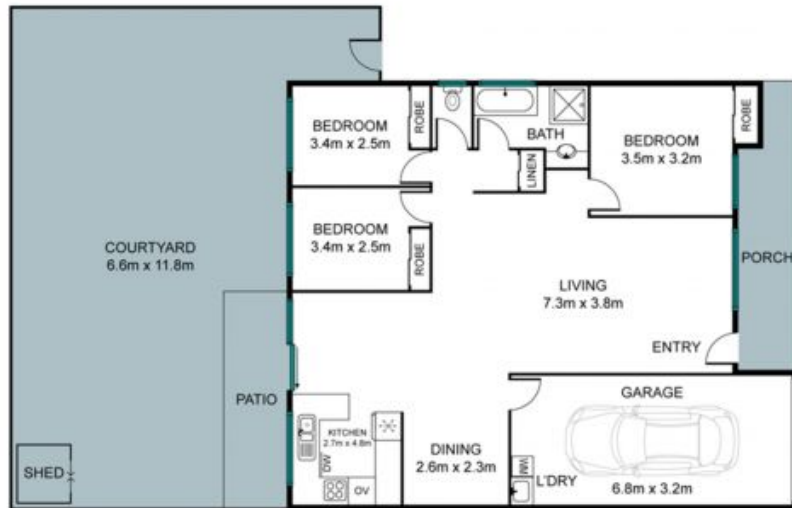
0455 333 306



Tristan Rowland

0411 572 970

Internal: 116 sqm
External: 87 sqm
Total Area: 203 sqm



The site plan and floorplan are not to scale; measurements are indicative and in metres. Bushes and trees are placed for illustration purposes. Plans should not be relied on. Interested parties should make and rely on their own enquiries.

15/9 Orchid Crescent, Fitzgibbon

stoneaspley.com.au