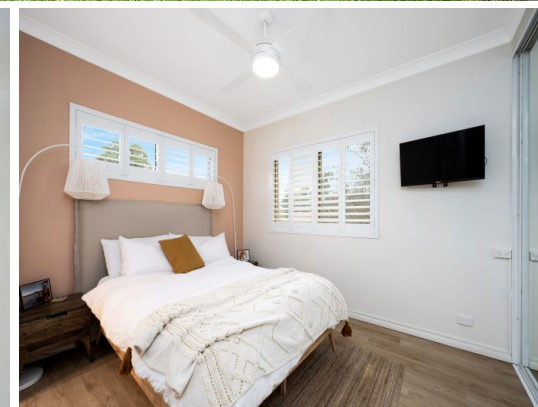
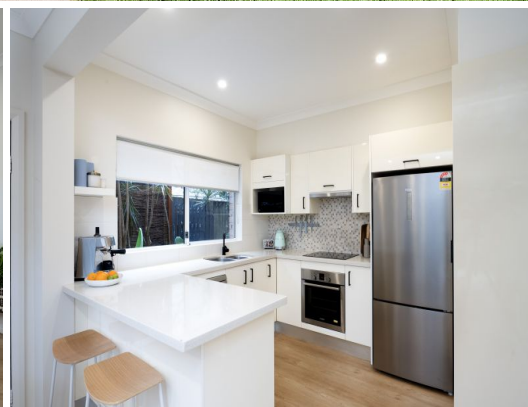


STONE



27b Park Road Greenwich, NSW

3 

2 

2 

SOLD BY STONE GREENWICH

House Like Duplex In Prized Walk To Rail Location

Embracing a private rear setting tucked away from the street is this superb duplex home offering a premier lifestyle of effortless convenience. Peacefully nestled on the cusp of St Leonards and Greenwich to combine urban convenience with family idyll, it showcases effortless indoor/outdoor living complete with quality appointments and delightful alfresco entertaining set amongst a garden sanctuary. This superb abode is a stroll to shops, excellent schools and St Leonards and Wollstonecraft stations.

- Blessed with high ceilings, fresh interiors and timber floors
- Spacious open plan living/dining flowing effortlessly to the outdoors
- Stylish Caesarstone kitchen with electric cooking, quality appliances
- Entertaining terrace, beautiful manicured gardens, sunny level lawns
- Three generous bedrooms with built in robes includes main with ensuite
- Freshly presented modern bathrooms, combined laundry/ powder room
- Air conditioning, double garage with storage and handy rear lane access.



Chris Keane

0497 102 114

27B Park Road
Greenwich

STONE



The site plan and floor plan are not to scale; measurements are indicative and in metres. Bushes and trees are placed for illustration purposes. Plans should not be relied on. Interested parties should make and rely on their own enquiries. All other information provided has been collected from reliable sources but cannot be guaranteed for accuracy.

27B Park Road
Greenwich

STONE



The site plan and floor plan are not to scale; measurements are indicative and in metres. Bushes and trees are placed for illustration purposes. Plans should not be relied on. Interested parties should make and rely on their own enquiries. All other information provided has been collected from reliable sources but cannot be guaranteed for accuracy.