

STONE



14/112 Alfred Street Sans Souci, NSW

2

2

1

Near-new resort townhouse meters from the beach

Set in the chic South Beach development, this near-new designer townhouse offers resort-style living just metres from the beach. Spread over two luxurious levels, it provides open-plan living flowing to a terrace and garden, with two spacious bedrooms and balcony upstairs. Live maintenance-free in the ultimate lifestyle hub a stroll from cafes, coastal promenades and shops.

- Near-new terrace-style townhouse in the boutique South Beach resort complex
- Luxurious finishes over two levels, including an open-plan kitchen and living space
- Two spacious upstairs bedrooms, main with balcony and ensuite
- Bi-fold doors open onto covered entertainment deck, lawn and lush gardens
- Communal resort-style swimming pool, sun deck and family-friendly gardens

Price:

\$1,175,000

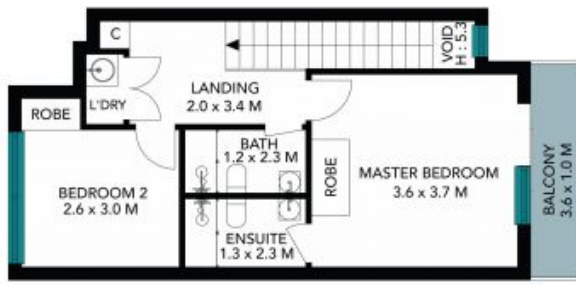


Sam Abbas

0406 750 075

Shaun Ramani

0417 444 919



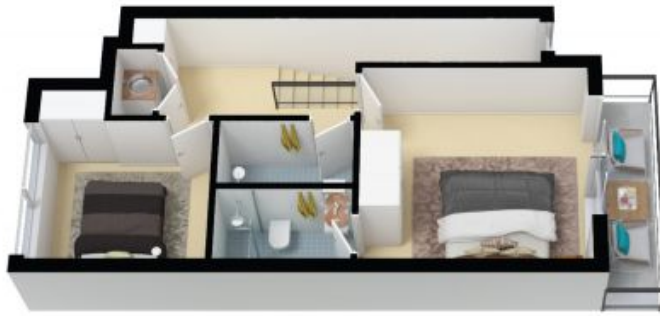
(NOT IN POSITION) (NOT IN POSITION)



The site plan and floor plan are not to scale, measurements are indicative and in metres. Shades and tones are placed for illustration purposes. Plans should not be relied on. Interested parties should make their own enquiries. All other information provided has been collected from reliable sources but cannot be guaranteed for accuracy.

14/112 Alfred Street, Sans Souci





UPPER LEVEL



LOWER LEVEL



The floor plan is not to scale, measurements are indicative and in metres. All features included in this 3D plan are for inspiration purposes only. This is not an exact replica of the property or the position of exterior elements. Plans should not be relied on. Interested parties should make and rely on their own enquiries.

14/112 Alfred Street, Sans Souci

