



24 Turton Avenue Clemton Park, NSW

3 

1 

2 

### Position Plus Potential

A well kept family home for almost 50 years. This perfectly located residence is set in a tree lined street and is brimming with potential. Located within walking distance to local schools, parks, cafes and Clemton Park shopping village, it offers a versatile floorplan and an exciting opportunity to extend and add further value.

#### Features:

- \* Three generous sized bedrooms and ornate ceilings throughout
- \* Fully tiled bathroom with combined bathtub and shower
- \* Neat and tidy kitchen with ample storage space
- \* Separate living room, large internal laundry + second toilet
- \* Level and child friendly backyard, great for entertaining
- \* Side driveway to lock up garage for two cars
- \* Potential to add further value
- \* Walking distance to local schools, parks and shopping village

The possibilities are what makes a property like this so sought-after, particularly in Clemton Park. The size of the block, the position and the potential are what it's all about h...

Price: \$1,482,000



**Connie Gerakis**

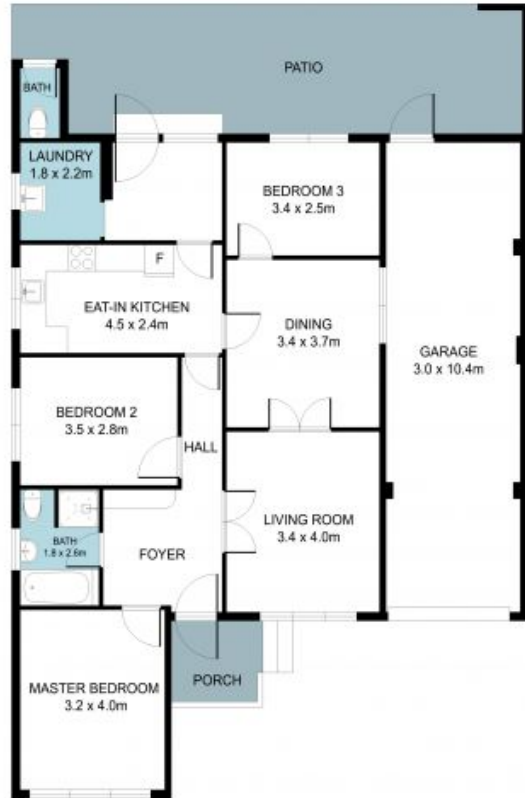
02 9558 0555



**George Karafotias**

0405 436 336

24 Turton Avenue  
Clemton Park



The site plan and floor plan are not to scale; measurements are indicative and in metres. Bushes and trees are placed for illustration purposes. Plans should not be relied on. Interested parties should make and rely on their own enquiries. All other information provided has been collected from reliable sources but cannot be guaranteed for accuracy.