



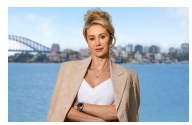
12/705 Military Road Mosman, NSW 2  2  2 

Bespoke Living in the heart of Mosman

This designer residence is fitted with bespoke finishes throughout. A spacious open plan living and dining area flows from the sleek gourmet kitchen with Miele appliances and stone benchtops to the living area. Seamlessly merging out to a sun filled entertaining terrace, enjoying a north easterly aspect and positioned in a modern, boutique development.

- Master suite with built in robes, stunning ensuite and direct access to terrace
- Generous walk in dressing room, home office or could be converted to a guest room
- Wonderful storage throughout, second bedroom with built in robes and full guest bathroom
- Bespoke joinery and cabinetry throughout, reverse cycle ducted air conditioning, video security intercom at entrance
- Direct level lift access to two security car spaces and added lock up storage
- Ready to move straight in and enjoy the easy lifestyle in the heart of Mosman Village
- Total area on title, 141 sqm

Price: Contact Marize Bellomo



Marize Bellomo
0414 972 203



Alanna Tohme
0450 862 088

705 Military Road
Mosman



The floor plan is not to scale; measurements are indicative and in metres. All features included in this 3D plan are for inspiration purposes only. This is not an exact replica of the property or the position of exterior elements. Plans should not be relied on. Interested parties should make and rely on their own enquiries.

705 Military Road
Mosman



(NOT IN POSITION)



The site plan and floor plan are not to scale; measurements are indicative and in metres. Bushes and trees are placed for illustration purposes. Plans should not be relied on. Interested parties should make and rely on their own enquiries. All other information provided has been collected from reliable sources but cannot be guaranteed for accuracy.