



12 Seinfeld Close McDowall, QLD



### Brick Family Home

This beautiful family home is set on an elevated block, at the bottom of a cul-de-sac just a short walk from parkland, and only minutes' walk from bushland reserve, McDowall State School and public transport options.

- New Carpet throughout
- Multiple living areas
- Kitchen with electric appliances and dishwasher
- Private entertainment area
- 3 bathrooms and toilets
- Fully fenced
- McDowall State School catchment
- Short walk to Streisand Drive Park & bushland walking tracks

**Price:** \$700 per week

**Available Date:** 14/10/2022



**Samantha Rowland**

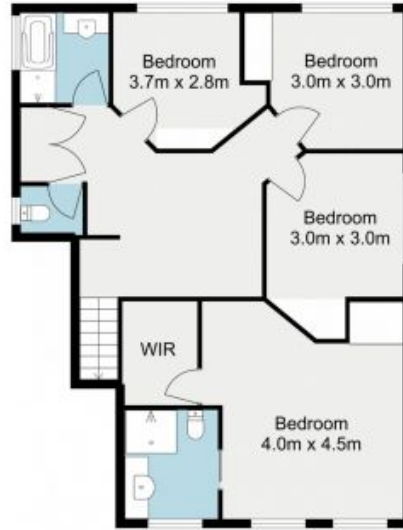
0419 768 335

This home offers:

4 bedrooms



**Level 1**



**Level 2**

The site plan and floorplan are not to scale; measurements are indicative and in metres. Bushes and trees are placed for illustration purposes. Plans should not be relied on. Interested parties should make and rely on their own enquiries.

**12 Seinfeld Close, McDowall**

stoneaspley.com.au