



63 Heather Street Wheeler Heights, NSW

3

1

1

### Renovation potential on generous corner block

Occupying a generous corner block of approx 556.4 sqm, this single-level brick home offers a huge amount of promise and potential that is ready to be explored. Offered up in near-original condition, the house is currently set up as a three-bedroom single-level home, but there is huge potential to renovate the current layout, develop the under-house space into further living space or accommodation, or even add another level (STCA).

One of the key attractions of this home is the lush, leafy outlook that stretches out to the rear. A spacious living zone garners lots of natural light from the north, and leafy green district views to the rear. This charming home is nestled on a quiet, family-friendly street that is surrounded by lush bushland, and is moments from Cromer Golf Course and Narrabeen Lake.

- Large approx 556.4sqm corner block with north-facing aspect and stunning leafy outlooks to the rear
- Back yard with lawn
- The garage has been converted into an office, offering a quiet space for home study or w...

Price:

Contact Agent



**Glenn Oakes**

0403 765 565



**Steve Thomas**

0432 600 083



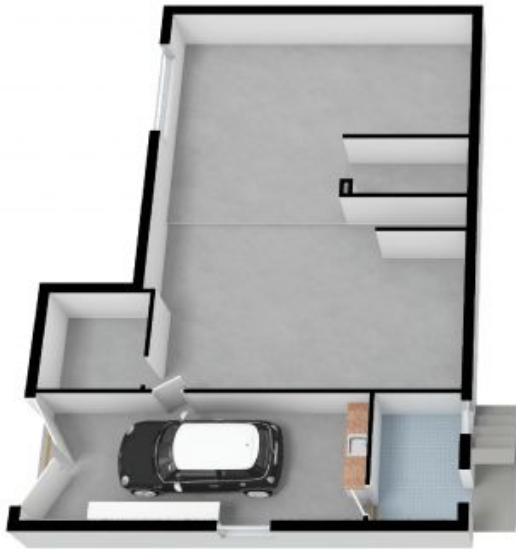


Ground Floor



First Floor





Ground Floor



First Floor



The floor plan is not to scale; measurements are indicative and in metres. All features included in this 3D plan are for inspiration purposes only. This is not an exact replica of the property or the position of exterior elements. Plans should not be relied on. Interested parties should make and rely on their own enquiries.