



5 Norfolk Place Carlingford, NSW

3

2

2

## High Side Home in Carlingford West Primary School Catchment

Immediate family allure and a quiet position opposite bushland ensure desirable qualities in this unique home. Well equipped for every stage of family life in a sought-after neighbourhood that delivers transport, shops and esteemed Tara, Kings and James Ruse schools all within minutes.

- Timeless interiors introduced by family lounge, combined casual living/dining
- Polished hardwood flooring, cathedral ceiling bathed in a wealth of sunlight
- Well-kept kitchen appointed with gas cooking and stainless steel appliances
- Modern bathroom, built-in robes to all bedrooms, main also features ensuite
- Poolside entertainers' yard, vergola-covered patio and easy-care gardens
- Oversized dual auto garage with storage, alarm security, r/c air conditioning
- Located in the prestigious Kingsdene Estate and zoned for Carlingford West Public catchment, moments to M2/city buses and shops

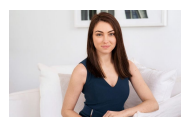
Disclaimer: All information contained herewith, including but not limited to the general property description, price and the address, is provided to Stone Beecroft/Castle Hill by third parties. We have obtained this information from sources we believe to be reliable; ho...

**Price:** Deposit Taken  
**Available Date:** 30/10/2021



**Eliza Zammit**

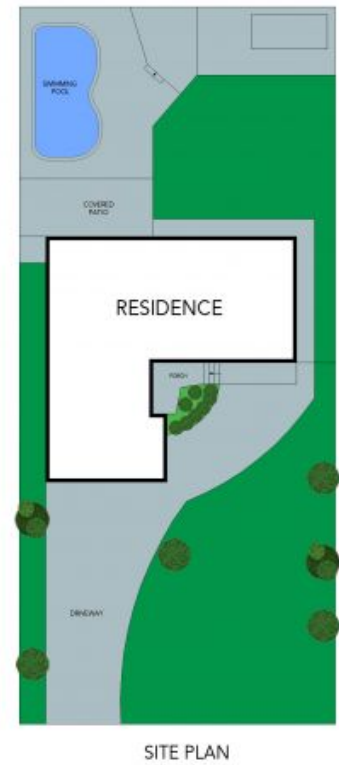
02 8893 2220



**Sarah Hastings**

02 8893 2218





The floor plan is not to scale; measurements are indicative and in metres. Exterior elements are not in position. Plans should not be relied on. Interested parties should make and rely on their own enquiries.

5 Norfolk Place, Carlingford

