

STONE



21 Lonsdale Avenue Berowra Heights, NSW

3 

1 

1 

## Sold by Dean and Di Finch

What a beauty!

This single level home is positioned on a quiet sunny street in prize location ideally for young families or downsizers. Start with the mostly level landscape surrounding the home, take you through each room with the sun spilling in, sizeable bedrooms lead to the heart of the home, the kitchen. Renovated and modern this space overlooks the large safe backyard where you can watch the kids run around and enjoy. All bedrooms have built-in robes, internal laundry with toilet and wood flooring throughout.

Easy living block (approx. 700sqm) with endless opportunity. Only footsteps to the back entrance to Wideview Public School, moments to Berowra Village Shops, Wideview Lookout, Local bus service to Berowra Station and Hornsby Westfield.

Features:

- Single level easy living on 700sqm (approx.) block

**Price:** \$1,475,000  
**Council Rates:** \$446.80 p/q  
**Water Rates:** \$145.71 p/q



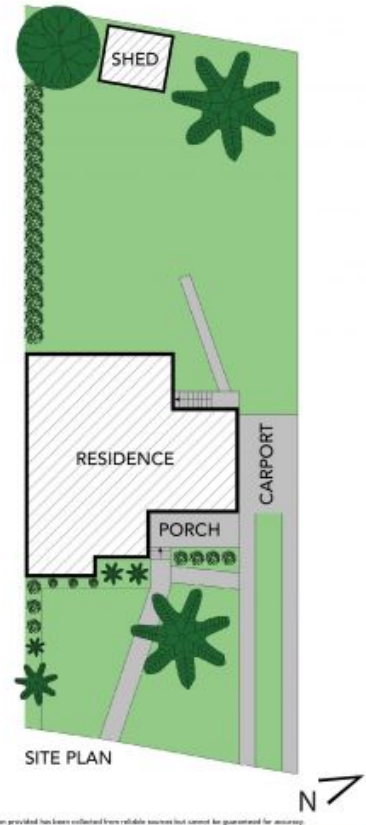
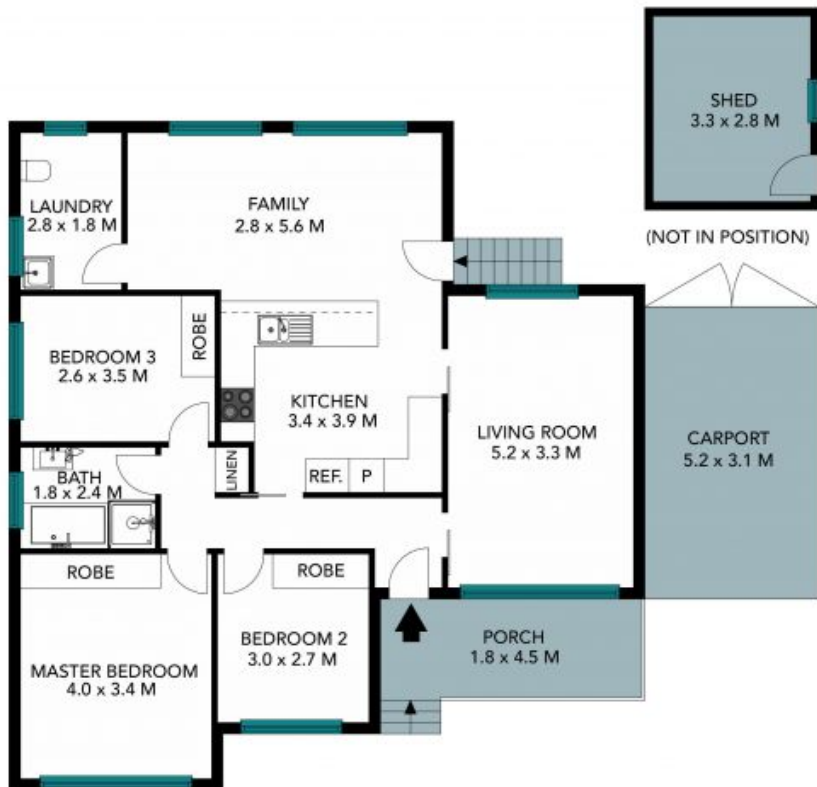
**Dean Finch**

0425 214 866



**Di Finch**

0425 226 180



The site plan and floor plan are not to scale, measurements are indicative and in meters. Robes and linen are placed for illustration purposes. Plans should not be relied on. Interested parties should make and rely on their own enquiries. All other information provided has been collected from reliable sources but cannot be guaranteed for accuracy.

21 Lonsdale Avenue, Berowra Heights

STONE



The floor plan is not to scale; measurements are indicative and in metres. All features included in this 3D plan are for inspiration purposes only. This is not an exact replica of the property or the position of exterior elements. Plans should not be relied on. Interested parties should make and rely on their own enquiries.

21 Lonsdale Avenue, Berowra Heights

