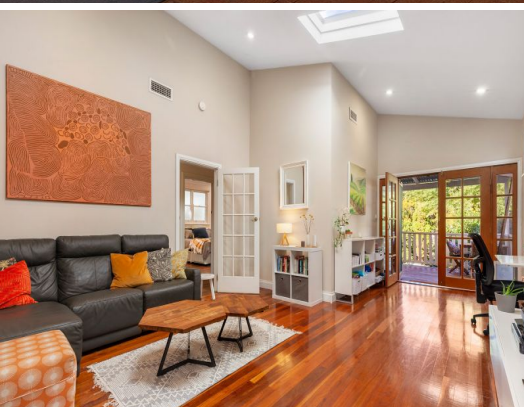


STONE



58 Cherry Road Eleebana, NSW

4 

2 

2 

Charm and Class on Cherry Road

Timeless features and modern elements combine to create a definitive 'forever home' feel in this flawless residence. Blending seamlessly into its magical garden setting and the stunning landscape of sought-after Cherry Road, it provides the quintessential lifestyle haven for discerning family buyer seeking class, comfort and a luxurious contemporary edge.

- Impeccably renovated home in one of Eleebana's most sought-after streets
- Faultless 3yr old kitchen boasting a self-cleaning oven and induction cooking
- Two beautiful living spaces, the first open plan and drenched in all-day sunlight
- The second is another WOW-factor space with raked ceilings and bright skylight
- Both living spaces open out to view-swept alfresco terraces via French doors
- Four bedrooms, the master with double French doors to the alfresco terrace
- Two bathrooms, the main fully renovated and showcasing a luxurious bathtub
- Ducted and zoned air-con, built-in robes, ceiling fans, timber floorboards

Price:

\$980,000



Kathleen Matinlassi

0407 244 162



SITE PLAN



The site plan and floor plan are not to scale; measurements are indicative and in metres. Bushes and trees are placed for illustration purposes. Plans should not be relied on. Interested parties should make and rely on their own enquiries. All other information provided has been collected from reliable sources but cannot be guaranteed for accuracy.



58 Cherry Road, Eleebana

STONE



The floor plan is not to scale, measurements are indicative and in metres. All features included in this 3D plan are for inspiration purposes only. This is not an exact replica of the property or the position of exterior elements. Plans should not be relied on. Interested parties should make and rely on their own enquiries.

58 Cherry Road, Eleebana

