



5/21 Grasmere Road Cremorne, NSW

2

1

1

## Spacious apartment in coveted lifestyle address

Privately set back from the street within a tightly held garden block of 15 is this modern apartment of comfort and exceptional convenience. Occupying the North-Western corner and boasting an oversized 196sqm floor plan of open plan living that opens to idyllic alfresco entertaining, its versatility will suit young families to downsizers and investors alike. Its enviable position is just moments from transport and lifestyle amenities, making this an incredible opportunity to secure a home in one of Cremorne's most desirable locations.

- Adorned with timber floors, high ceilings and classic archways throughout
- Spacious open plan living and dining with built-in entertainment cabinetry
- Delightful versatile sunroom; potential for home office or extended living
- Large private entertaining courtyard with covered area and established gardens
- Master bedroom with built-ins and split air-con, good-sized second bedroom
- Dedicated kitchen equipped with stainless steel appliances, modern bathroom
- Single lockup garage with internal access opening to dedicated storage room
- Stroll to Neutral Bay shops, cafes, restaurants and express city bus services

Price:

\$1,250,000



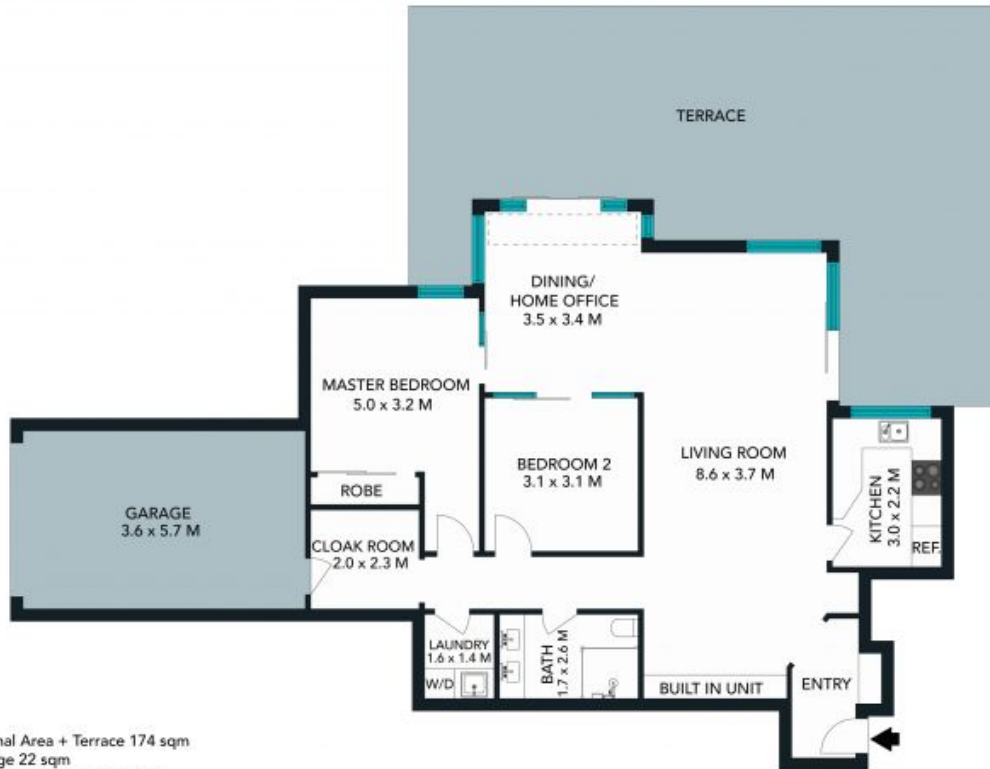
**Marize Bellomo**

0414 972 203



**Bruce N. Huang**

0468 694 060



Internal Area + Terrace 174 sqm  
Garage 22 sqm  
Total Area On Title 196 sqm

The floor plan is not to scale, measurements are indicative and in metres. Exterior elements are not to position. Plans should not be relied on. Interested parties should make and rely on their own enquiries. All other information provided has been collected from reliable sources but cannot be guaranteed for accuracy.



5/21-23 Grasmere Road, Cremorne







Internal Area + Terrace 174 sqm  
 Garage 22 sqm  
 Total Area On Title 196 sqm

The floor plan is not to scale; measurements are indicative and in metres. All features included in this 3D plan are for inspiration purposes only. This is not an exact replica of the property or the position of exterior elements. Plans should not be relied on. Interested parties should make and rely on their own enquiries.



5/21-23 Grasmere Road, Cremorne

