

26 Plimsoll Street Sans Souci, NSW

3

2

2

Entertainers Oasis in a Premium Location

A resort-style family home of impressive space and privacy, this solid double brick executive duplex offers a superb lifestyle property tucked away on a corner block position in a leafy setting. It merges quality design, flowing light-filled living spaces and a landscaped outdoor area to make a great entertainer's retreat. This outstanding street address is also within easy access to all of the area's fine schools, shopping, cafes, with the Kogarah Bay foreshore at the end of the street.

- A spacious two-storey floorplan and a focus on easy entertaining
- Private backyard, solar heated swimming pool and poolside entertainment space
- A generous layout features open lounge, dining and family areas
- Good sized bedrooms, renovated master bathroom plus downstairs WC
- Upstairs master bedroom with a walk-in robe, ensuite and balcony
- Contemporary caesarstone kitchen with high-end Miele and Gaggenau appliances
- Single garage/rumpus room with internal access plus extra car space
- Ducted air, Blackbutt timber floors, Plantation shutters and alarm system

Price:

SOLD \$1,430,000 | Ray Fadel



Ray Fadel

0413 177 739

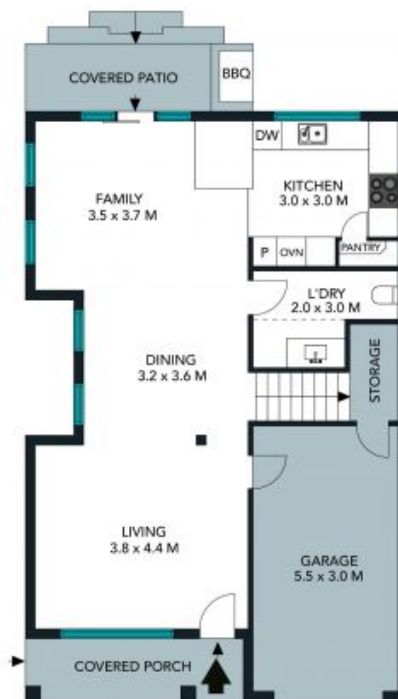


Shaun Ramani

0417 444 919



FIRST FLOOR



GROUND FLOOR



SITE PLAN



The site plan and floor plan are not to scale, measurements are indicative and in metres. Balues and trees are placed for illustrative purposes. Plans should not be relied on, interested parties should make and rely on their own enquiries. All other information provided has been collected from reliable sources but cannot be guaranteed for accuracy.

26 Plimsoll Street, Sans Souci





FIRST FLOOR



GROUND FLOOR



The floor plan is not to scale, measurements are indicative and in metres. All features included in this 3D plan are for inspiration purposes only. This is not an exact replica of the property or the position of exterior elements. Plans should not be relied on. Interested parties should make and rely on their own enquiries.

26 Plimsoll Street, Sans Souci

