



2 Yarrabee Place BILGOLA PLATEAU, NSW

4 

3 

2 

**SOLD! By Simone Jarvis 0405 470 250**

Motivation is high for your offer!

This property certainly is a grand masterpiece when it comes to space, style and layout. Views of Pittwater from most of the house offer an interesting outlook and sun all day. Beautifully presented throughout with multiple living areas and stunning parent's retreat.

The home boasts various outdoor entertaining spaces that create flexibility with the weather when considering al fresco living.

From the stylish entry to the spacious lounge, complete with bi-folding doors to a partially covered balcony, the areas flow seamlessly.

The kitchen host state-of-the-art appliances, pantry, walk in larder and wide island bench, perfect for the focal point of the home. This area is open plan to the dining section and encapsulates the Pittwater views to Bayview & Scotland Island via more bi-folds and a timber styled deck.

There is a DA approval for a swimming pool and the double carport (could be a DLUG) offers additional storage room....

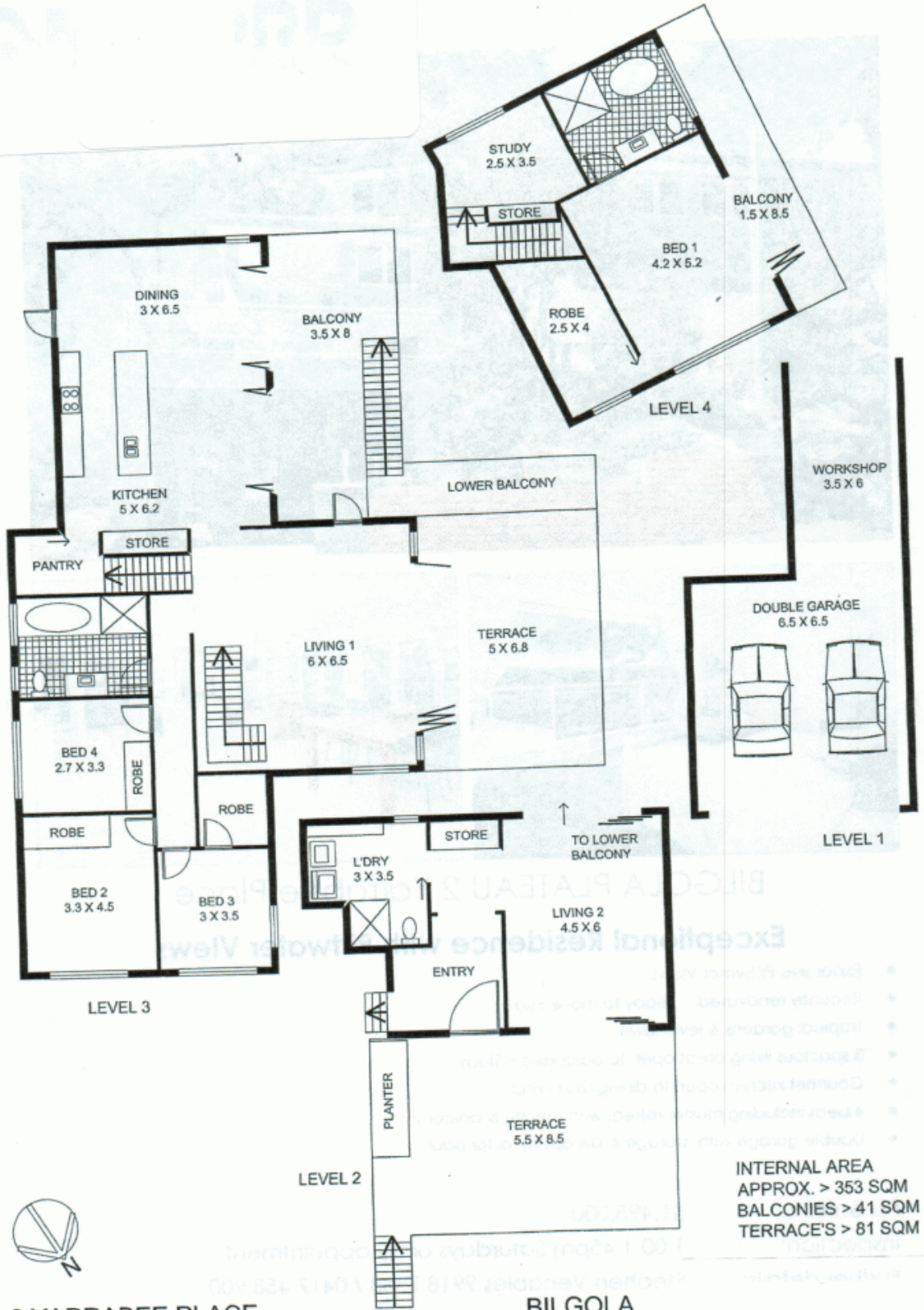
**Price:** \$1,495,000



**Simone Sinclair**

0405 470 250





2 YARRABEE PLACE

BILGOLA

INTERNAL AREA  
APPROX. > 353 SQM  
BALCONIES > 41 SQM  
TERRACE'S > 81 SQM

DISCLAIMER - This floorplan is intended as a guide only and any person using this information should rely on their own enquiries. No representations or warranties of any nature are given or intended