

25/61 Keira Street Wollongong, NSW

2 2 1

Exclusive sub-penthouse positioning

The Beleira complex is ideally located in the heart of Wollongong CBD and right at the footsteps of the immaculate coast line, cafes, boutiques, restaurants, and clubs. Your exclusive city address will have seamless access to the CBD's vast transport network and is only stone's throw from all that Wollongong has to offer. Boasting serene water views along with an escarpment backdrop this sub-penthouse is sure to impress the professional couple or the most fastidious of tenants.

- Open plan living area with air con enjoying unanimous access to the balcony
- Designer kitchen with quality stainless steel appliances
- Two over-sized bedrooms and a versatile floor-plan
- Mirror built in wardrobes to both, en-suite to main
- Intercom security, recently completed complex, single secure car space plus storage.

Price: \$495 per week

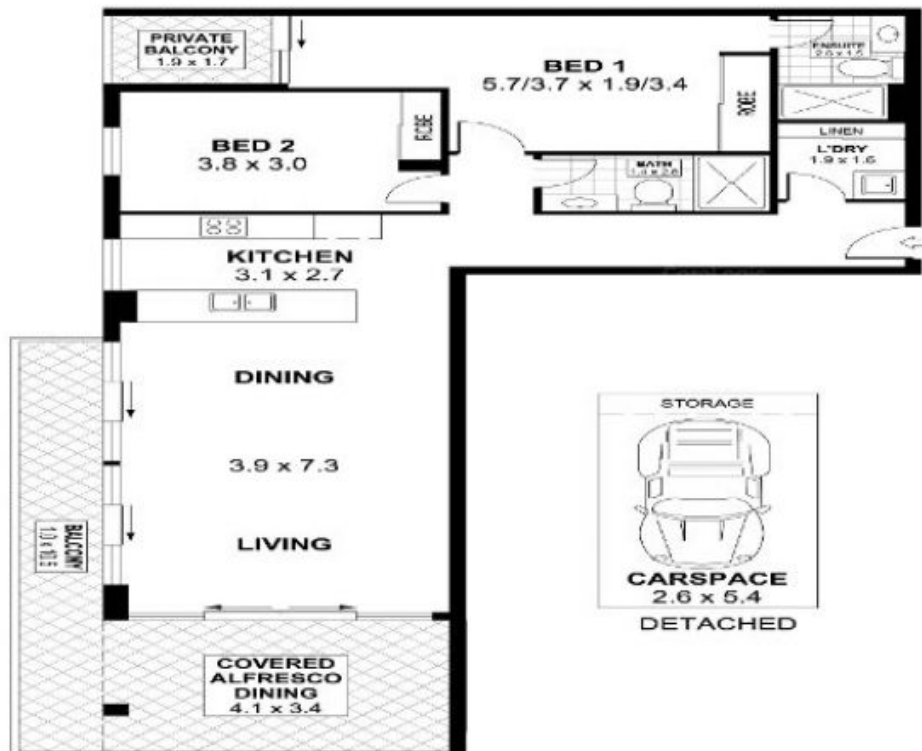
Bond: \$1,980

Available Date: 21/03/2019



Darnell Haselau

0426 400 240



0 1 2 3 4 **SCALE (METRES)**
PLANS SHOWN ONLY INDICATIVE OF LAYOUT. DIMENSIONS ARE APPROXIMATE.

Nov 18 IT 25, 61 KEIRA STREET

INT : 88m²
EXT : 27m²
GARAGE : 14m²
CoreLogic
WOLLONGONG