

STONE



223 Pittwater Road Manly, NSW

3 

1 

1 

Quiet freestanding beach cottage

A rare and prized offering in the sought-after Manly Flat, this updated freestanding cottage provides a ready-made haven with further scope to redecorate or extend and add value (STCA). The lifestyle setting is second-to-none with eateries, Harris Farm and city/wharf buses only footsteps away, and Manly Aquatic Centre and Queenscliff Beach within a few minutes stroll.

- 'Easton Lodge' sits behind a privacy fence on an easycare 234sqm parcel
- Entrance hall with timber flooring, high rosette ceilings and picture rails
- Air conditioned living room extends to a vast covered alfresco dining area
- Tidy open plan kitchen, modern bathroom, double bedrooms with built-ins
- Set private level lawns and landscaped gardens bask in northerly sun
- Gated access to pet and child-safe gardens with a deep rear courtyard
- Stroll to Manly Lagoon and vibrant, walk to Manly Beach, Village and Wharf
- Secure carport, three lock-up sheds, potential to go up and add value (STCA)

Price:

Contact Agent



Eddy Piddington

0414 333 907



Tim Mumford

0421 942 693



(NOT IN POSITION)



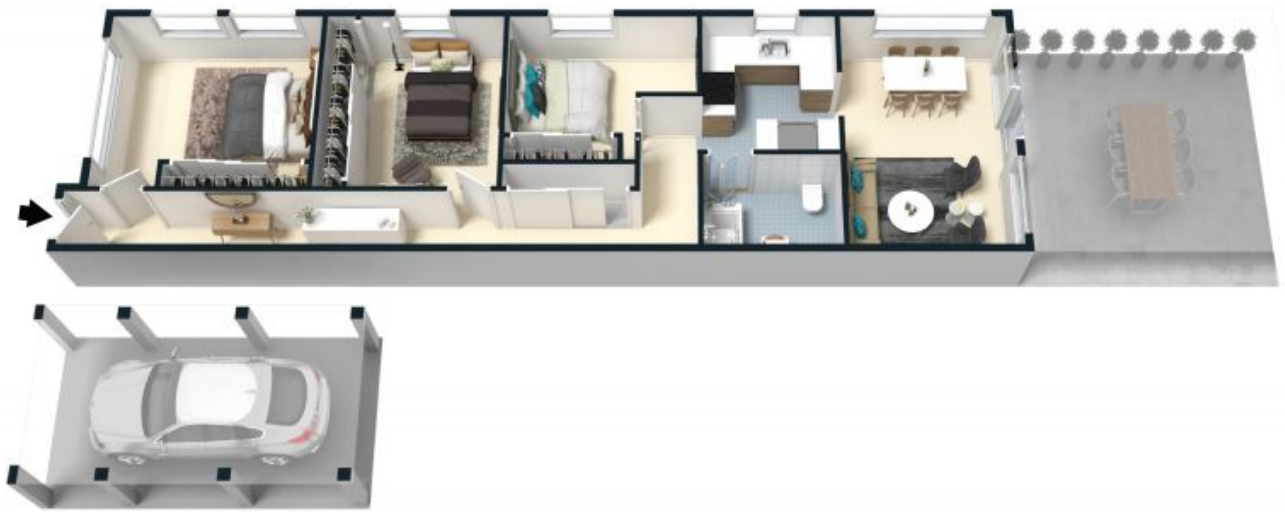
(NOT IN POSITION)

The site plan and floor plan are not to scale; measurements are indicative and in metres. Bushes and trees are placed for illustration purposes. Plans should not be relied on. Interested parties should make and rely on their own enquiries.



223 Pittwater Road, Manly
stonerealestate.com.au

Produced by DIAKRIT



The floor plan is not to scale; measurements are indicative and in metres. All features included in this 3D plan are for inspiration purposes only. This is not an exact replica of the property or the position of exterior elements. Plans should not be relied on. Interested parties should make and rely on their own enquiries.

223 Pittwater Road, Manly
stonerealestate.com.au

Produced by **DIAKRIT**