



1/51 Figtree Crescent Figtree, NSW

3 

2 

2 

## Contemporary Elegance...

At the apex of contemporary elegance and ultimate lifestyle convenience sit these premium townhouse residences, capturing the essence of relaxed family living. Enhanced by high finishes throughout, the properties each showcase an open-plan lounge, dining and kitchen area flowing through oversized glass doors to the sheltered sun-drenched balcony.

An additional private outdoor entertaining courtyard enjoys easy access from the spacious main bedroom and is the perfect space to unwind. Chic interiors, sparkling modern bathrooms and plentiful natural light underpin the stylish executive appeal of this premium development, situated within footsteps of local schools, public transport and Figtree Grove shopping mall.

### Features:

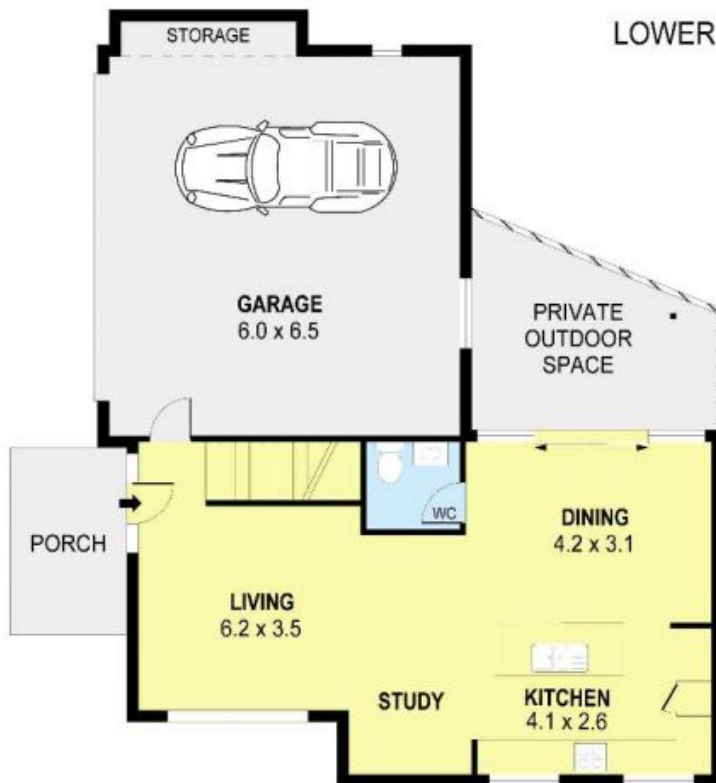
- \* Open plan living, dining and kitchen area with fluid access to balcony
- \* Spacious bedrooms with BIW's plus main bedroom with modern ensuite
- \* Private outdoor entertaining area with easy access from main bedroom

Price:

\$740,000



LOWER FLOOR



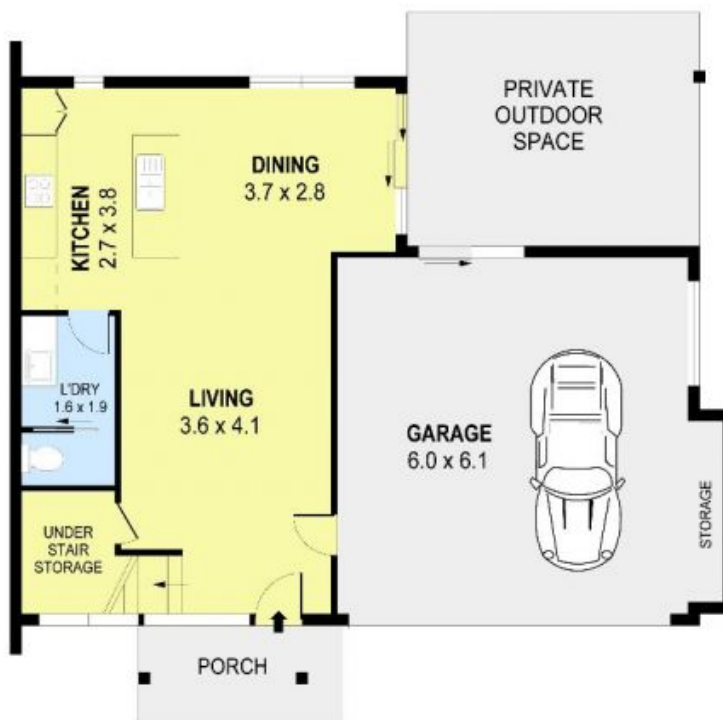
GROUND FLOOR



PLANS SHOWN ONLY INDICATIVE OF LAYOUT. DIMENSIONS ARE APPROXIMATE.  
Ref. No. 43617



UPPER FLOOR



GROUND FLOOR



PLANS SHOWN ONLY INDICATIVE OF LAYOUT. DIMENSIONS ARE APPROXIMATE.  
Ref. No. 43617